



Latitude



Gladiator



Equinox



Cruiser

# 2019-2020 South East Asia General Catalogue

# CONTENTS

|  |    |
|--|----|
| EQUINOX ANALYTICAL AND SEMI-MICRO BALANCES | 3  |
| EQUINOX PRECISION BALANCE                  | 4  |
| SOLIS ANALYTICAL AND SEMI-MICRO BALANCES   | 5  |
| SOLIS PRECISION BALANCES                   | 6  |
| LUNA ANALYTICAL AND PRECISION BALANCES     | 7  |
| NIMBUS® PRECISION BALANCES                 | 8  |
| HIGHLAND® PORTABLE PRECISION BALANCES      | 9  |
| STRATA PORTABLE BALANCES                   | 10 |
| CORE® PORTABLE COMPACT BALANCES            | 11 |
| DUNE® PORTABLE COMPACT BALANCES            | 12 |
| CB COMPACT BALANCES                        | 13 |
| PMB MOISTURE ANALYSER                      | 14 |
| TBB TRIPLE-BEAM BALANCES                   | 16 |
| SHS CRANE SCALES                           | 17 |
| LHS CRANE SCALES                           | 18 |
| IHS CRANE SCALES                           | 19 |
| ASTRO® COMPACT SCALES                      | 20 |
| LATITUDE COMPACT BENCH SCALES              | 21 |
| CRUISER BENCH CHECKWEIGHING SCALES         | 22 |
| CPWPLUS WEIGHING                           | 23 |
| GBK AND GFK BENCH CHECKWEIGHING SCALES     | 24 |
| AGB AND AGF BENCH AND FLOOR SCALES         | 25 |
| BKT FLOOR CHECKWEIGHING SCALES             | 26 |
| WBW WASHDOWN SCALES                        | 27 |
| GLADIATOR WASHDOWN SCALES                  | 28 |
| SWIFT PRICE COMPUTING RETAIL SCALES        | 29 |
| LBC COUNTING SCALES                        | 30 |
| CRUISER BENCH COUNTING SCALES              | 31 |
| CBD BENCH COUNTING SCALES                  | 32 |
| GBC AND GFC BENCH COUNTING SCALES          | 33 |
| BCT BENCH AND FLOOR COUNTING SCALES        | 34 |
| PT PLATFORMS                               | 35 |
| PTM DRUM AND WHEELCHAIR SCALE              | 36 |
| AELP PALLET BEAMS                          | 37 |
| PTS PLUS AND PTT PALLET TRUCK SCALES       | 38 |
| GK INDICATOR                               | 39 |
| AE 403 SERIES INDICATOR                    | 40 |
| AE 503 SERIES INDICATOR                    | 41 |
| AE 504 SERIES COUNTING INDICATOR           | 42 |
| GC COUNTING INDICATOR                      | 43 |
| MTB BABY AND TODDLER SCALE                 | 44 |
| MDW HEALTH AND FITNESS SCALES              | 45 |
| MUW HEALTH AND FITNESS SCALES              | 46 |
| MCW CHAIR WEIGHING SCALE                   | 47 |
| OIML WEIGHT SETS                           | 48 |
| ACCESSORIES                                | 49 |



**EC Type Approved** - Approval is required for selling goods by weight and in other specified weighing applications in Europe. EC Type Approval can be granted for most types of Non-Automatic Weighing Instruments (NAWI), after the correct testing procedure is performed by an approved body. A test report and certificate are issued to the manufacturer or importer of the product that has undergone the type approval test.



Adam Equipment manufactures balances and scales for laboratory, industrial, medical, retail, and education customers worldwide. Founded in the United Kingdom in 1972, Adam has strategically established a network of offices throughout the world to provide a high level of service to its customers everywhere. With facilities in the United Kingdom, United States, South Africa, Australia, Germany and China, Adam maintains a strong global presence.

From its beginnings, Adam has focused on delivering products with the right balance of speed, performance and value. Adam is committed to manufacturing reliable products with proven technology and user-friendly features. The company takes great pride in providing comprehensive, responsive support and assistance to every customer. Adam Equipment UK is ISO 9001-2018 and NMO accredited to certify balances and scales for trade use.

Adam's commitment to ongoing, customer-driven product development ensures that the company will continue to move forward, bringing customers the weighing solutions they need now and in the future.

## Icon Key:

|  |                               |  |                         |
|--|-------------------------------|--|-------------------------|
|  | Internal Rechargeable Battery |  | Time                    |
|  | External Calibration          |  | Date                    |
|  | Internal Calibration          |  | USB                     |
|  | Battery                       |  | RS-232 Port             |
|  | Backlit Display               |  | Built in Printer        |
|  | GLP/ISO Printouts             |  | Tare                    |
|  | Weigh-Below                   |  | Approved for Trade      |
|  | Security Devices              |  | Multiple Weighing Units |
|  | IP66-Rated Waterproof         |  | IP67-Rated Waterproof   |



## FEATURES

- Large, responsive 5" 800x480 pixel touch-screen display
- Level indicator and adjustable feet ensure proper balance setup for optimum weighing results
- Security slot for optional Kensington-type lock and cable to help prevent theft
- Large, grade 304 stainless steel pan allows easy cleaning
- RS-232 interface is available to provide speedy connection to computers and printers
- USB host for memory card
- Built-in memory for storing products and settings
- External calibration allows for verification and adjustment with weights
- Selectable digital filtering helps minimise effects of vibration and disturbances
- Security password control prevents unauthorised access
- Printouts include date and time for data tracking within Good Laboratory Practices (GLP) guidelines
- Preset tare function speeds the process of repetitive weighing
- Parts counting with freely selectable sample sizes
- Multilingual display allows use in many different countries
- Memory accumulation totals results
- Checkweighing with audible alarm
- AC adapter included

*Versatile and resilient, Equinox provides intuitive operation and readily accessible functions*

## GENERAL SPECIFICATIONS

- Weighing units: g, mg, ct, GN, lb, oz, dwt, mm, ozt, tl.H, tl.S, tl.T, T, custom unit
- Interface: RS-232, USB
- Power Supply: 24V 50/60Hz 500mA adapter
- Display: 5" Touch screen
- Calibration: Internal automatic calibration
- Housing: ABS plastic
- Operating Temperature: 10° to 30°C
- Calibration: Internal automatic calibration/  
External calibration

## APPLICATIONS

- Weighing
- Parts counting
- Percentage weighing
- Checkweighing
- Dynamic / animal weighing
- Accumulation of weight
- Density determination
- Display hold
- Formulation
- Statistics
- Textile

## External Calibration

| Model           | Capacity | Readability | Pan Size |
|-----------------|----------|-------------|----------|
| <b>EAB 124e</b> | 120g     | 0.0001g     | 80mm ø   |
| <b>EAB 224e</b> | 220g     | 0.0001g     | 80mm ø   |
| <b>EAB 314e</b> | 310g     | 0.0001g     | 80mm ø   |

## Internal Calibration

| Model           | Capacity   | Readability    | Pan Size |
|-----------------|------------|----------------|----------|
| <b>EAB 125i</b> | 62g / 120g | 0.01mg / 0.1mg | 80mm ø   |
| <b>EAB 225i</b> | 82g / 220g | 0.01mg / 0.1mg | 80mm ø   |
| <b>EAB 124i</b> | 120g       | 0.0001g        | 80mm ø   |
| <b>EAB 224i</b> | 220g       | 0.0001g        | 80mm ø   |
| <b>EAB 314i</b> | 310g       | 0.0001g        | 80mm ø   |
| <b>EAB 414i</b> | 410g       | 0.0001g        | 80mm ø   |
| <b>EAB 514i</b> | 510g       | 0.0001g        | 80mm ø   |



## ACCESSORIES

| Item number | Description                                       |           |                                      |
|-------------|---|-----------|--------------------------------------|
| 104008036   | Anti-vibration table                              | 700100419 | E1 1mg - 50g Calibration Weight Set  |
| 1060014262  | Density kit for balance up to 0.0001g readability | 700100420 | E1 1mg - 100g Calibration Weight Set |
| 3012014259  | In-use cover                                      | 700100421 | E1 1mg - 200g Calibration Weight Set |
| 1120011156  | ATP thermal printer                               | 700100398 | E1 5g Calibration Weight             |
| 3014011014  | RS-232 cable M-F                                  | 700100399 | E1 10g Calibration Weight            |
| 700100046   | Kensington-type lock and cable                    | 700100400 | E1 20g Calibration Weight            |
| 600002028   | AdamDU Data Collection Program                    | 700100401 | E1 50g Calibration Weight            |
| 700660290   | Calibration certificate                           | 700100026 | E2 1mg - 200g calibration weight set |
| 1120014641  | AIP impact printer                                | 700100207 | E2 1g to 200g calibration weight set |
| 700100410   | ABI-1 Ioniser                                     | 700100232 | E2 50g Calibration Weight            |
|             |   | 700100022 | E2 100g calibration weight           |
|             |   | 700100023 | E2 200g calibration weight           |



## FEATURES

- Large, responsive 5" 800x480 pixel touch-screen display
- Level indicator and adjustable feet ensure proper balance setup for optimum weighing results
- Security slot for optional Kensington-type lock and cable to help prevent theft
- Large, grade 304 stainless steel pan allows easy cleaning
- RS-232 interface is available to provide speedy connection to computers and printers
- USB host for memory card
- Built-in memory for storing products and settings
- External calibration allows for verification and adjustment with weights
- Selectable digital filtering helps minimise effects of vibration and disturbances
- Security password control prevents unauthorised access
- Printouts include date and time for data tracking within Good Laboratory Practices (GLP) guidelines
- Preset tare function speeds the process of repetitive weighing
- Parts counting with freely selectable sample sizes
- Multilingual display allows use in many different countries
- Memory accumulation totals results
- Checkweighing with audible alarm
- AC adapter included

*Our most sophisticated balance, with clear results just a touch away*

## GENERAL SPECIFICATIONS

- Weighing units: g, mg, lb, oz, ct, GN, dwt, mm, ozt, T, tl.H, tl.S, tl.T, custom unit
- Interface: RS-232, USB
- Power Supply: 24V 50/60Hz 500mA adapter
- Display: 5" Touchscreen
- Housing: ABS plastic
- Operating Temperature: 10° to 30°C
- Calibration: Internal automatic calibration / External Calibration

## APPLICATIONS

- Weighing
- Parts counting
- Percentage weighing
- Checkweighing
- Dynamic / animal weighing
- Accumulation of weight
- Density determination
- Display hold
- Formulation
- Statistics
- Textile

## Internal Calibration

| Model            | Capacity | Readability | Pan Size  |
|------------------|----------|-------------|-----------|
| <b>EPB 363i</b>  | 360g     | 0.001g      | 110mm ø   |
| <b>EPB 723i</b>  | 720g     | 0.001g      | 110mm ø   |
| <b>EPB 1203i</b> | 1200g    | 0.001g      | 110mm ø   |
| <b>EPB 2103i</b> | 2100g    | 0.001g      | 110mm ø   |
| <b>ETB 3202i</b> | 3200g    | 0.01g       | 185x185mm |
| <b>ETB 6202i</b> | 6200g    | 0.01g       | 185x185mm |

## External Calibration

| Model            | Capacity | Readability | Pan Size  |
|------------------|----------|-------------|-----------|
| <b>EPB 363e</b>  | 360g     | 0.001g      | 110mm ø   |
| <b>EPB 723e</b>  | 720g     | 0.001g      | 110mm ø   |
| <b>ETB 3202e</b> | 3200g    | 0.01g       | 185x185mm |
| <b>ETB 6202e</b> | 6200g    | 0.01g       | 185x185mm |
| <b>ETB 8202e</b> | 8200g    | 0.01g       | 185x185mm |



## ACCESSORIES

| Item number | Description                                       |
|-------------|---|
| 1060014262  | Density kit for balance up to 0.0001g readability |
| 3012014260  | In-use cover                                      |
| 1120011156  | ATP thermal printer                               |
| 3014011014  | RS-232 cable M-F                                  |
| 700100046   | Kensington-type lock and cable                    |
| 600002028   | AdamDU Data Collection Program                    |
| 700660290   | Calibration certificate                           |
| 1120014641  | AIP impact printer                                |
| 700100007   | F1 100g calibration weight                        |
| 700100012   | F1 200g calibration weight                        |
| 700100008   | F1 500g calibration weight                        |
| 700100009   | F1 1kg calibration weight                         |
| 700100010   | F1 2kg calibration weight                         |
| 700100013   | F1 5kg Calibration Weight                         |



## FEATURES

- High-resolution graphic display is amply sized for clear visibility
- Level indicator and adjustable feet ensure proper balance setup for optimum weighing results
- Security slot for optional Kensington-type lock and cable to help prevent theft
- Large, grade 304 stainless steel pan allows easy cleaning
- RS-232 interface is available to provide speedy connection to computers and printers
- External calibration allows for verification and adjustment with weights
- Selectable digital filtering helps minimise effects of vibration and disturbances
- Printouts include date and time for data tracking within Good Laboratory Practices (GLP) guidelines
- Multilingual display allows use in many different countries
- Memory accumulation totals results
- Checkweighing with audible alarm
- Parts counting with preset sample sizes
- AC adapter included

*Superb performance and simple operation for demanding laboratories*

## GENERAL SPECIFICATIONS

- Weighing units: g, mg, lb, oz, ct, GN, dwt, mm, ozt, T, tl.H, tl.S, tl.T, custom unit
- Interface: RS-232
- Power Supply: 24V 50/60Hz 500mA adapter
- Display: Graphic display with 15mm -high digits
- Calibration: Internal automatic calibration
- Housing: ABS plastic
- Operating Temperature: 10° to 30°C
- Calibration: External calibration

## APPLICATIONS

- Weighing
- Parts counting
- Percentage weighing
- Checkweighing
- Dynamic / animal weighing
- Accumulation of weight
- Density determination
- Display hold
- Formulation

## External Calibration

| Model           | Capacity | Readability | Pan Size |
|-----------------|----------|-------------|----------|
| <b>SAB 124e</b> | 120g     | 0.0001g     | 80mm ø   |
| <b>SAB 224e</b> | 220g     | 0.0001g     | 80mm ø   |
| <b>SAB 314e</b> | 310g     | 0.0001g     | 80mm ø   |

## Internal Calibration

| Model           | Capacity   | Readability   | Pan Size |
|-----------------|------------|---------------|----------|
| <b>SAB 125i</b> | 62g / 120g | 0.01mg/ 0.1mg | 80mm ø   |
| <b>SAB 225i</b> | 82g / 220g | 0.01mg/ 0.1mg | 80mm ø   |
| <b>SAB 124i</b> | 120g       | 0.0001g       | 80mm ø   |
| <b>SAB 224i</b> | 220g       | 0.0001g       | 80mm ø   |
| <b>SAB 314i</b> | 310g       | 0.0001g       | 80mm ø   |
| <b>SAB 414i</b> | 410g       | 0.0001g       | 80mm ø   |
| <b>SAB 514i</b> | 510g       | 0.0001g       | 80mm ø   |



## ACCESSORIES

| Item number | Description                                       | Item number | Description                          |
|-------------|---|-------------|--------------------------------------|
| 104008036   | Anti-vibration table                              | 700100419   | E1 1mg - 50g Calibration Weight Set  |
| 1060014262  | Density kit for balance up to 0.0001g readability | 700100420   | E1 1mg - 100g Calibration Weight Set |
| 3012014259  | In-use cover                                      | 700100421   | E1 1mg - 200g Calibration Weight Set |
| 1120011156  | ATP thermal printer                               | 700100398   | E1 5g Calibration Weight             |
| 3014011014  | RS-232 cable M-F                                  | 700100399   | E1 10g Calibration Weight            |
| 700100046   | Kensington-type lock and cable                    | 700100400   | E1 20g Calibration Weight            |
| 600002028   | AdamDU Data Collection Program                    | 700100401   | E1 50g Calibration Weight            |
| 700660290   | Calibration certificate                           | 700100026   | E2 1mg - 200g calibration weight set |
| 1120014641  | AIP impact printer                                | 700100207   | E2 1g to 200g calibration weight set |
| 700100410   | ABI-1 Ioniser                                     | 700100232   | E2 50g Calibration Weight            |
|             |   | 700100022   | E2 100g calibration weight           |
|             |   | 700100023   | E2 200g calibration weight           |



## FEATURES

- High-resolution graphic display is amply sized for clear visibility
- Level indicator and adjustable feet ensure proper balance setup for optimum weighing results
- Security slot for optional Kensington-type lock and cable to help prevent theft
- Large, grade 304 stainless steel pan allows easy cleaning
- RS-232 interface is available to provide speedy connection to computers and printers
- External calibration allows for verification and adjustment with weights
- Selectable digital filtering helps minimise effects of vibration and disturbances
- Printouts include date and time for data tracking within Good Laboratory Practices (GLP) guidelines
- Multilingual display allows use in many different countries
- Memory accumulation totals results
- Checkweighing with audible alarm
- Parts counting with preset sample sizes
- AC adapter included

## High-resolution graphic display and outstanding precision

### GENERAL SPECIFICATIONS

- Weighing units: g, mg, lb, oz, ct, GN, dwt, mm, ozt, T, tl.H, tl.S, tl.T, custom unit
- Interface: RS-232
- Power Supply: 24V 50/60Hz 500mA adapter
- Display: Graphic display with 15mm -high digits
- Calibration: External calibration
- Housing: ABS plastic
- Operating Temperature: 10° to 30°C
- Calibration: Internal automatic calibration

### APPLICATIONS

- Weighing
- Parts counting
- Percentage weighing
- Checkweighing
- Dynamic / animal weighing
- Accumulation of weight
- Density determination
- Display hold
- Formulation

## External Calibration

| Model            | Capacity | Readability | Pan Size  |
|------------------|----------|-------------|-----------|
| <b>SPB 363e</b>  | 360g     | 0.001g      | 110mm ø   |
| <b>SPB 723e</b>  | 720g     | 0.001g      | 110mm ø   |
| <b>STB 3202e</b> | 3200g    | 0.01g       | 185x185mm |
| <b>STB 6202e</b> | 6200g    | 0.01g       | 185x185mm |
| <b>STB 8202e</b> | 8200g    | 0.01g       | 185x185mm |

## Internal Calibration

| Model            | Capacity | Readability | Pan Size  |
|------------------|----------|-------------|-----------|
| <b>SPB 363i</b>  | 360g     | 0.001g      | 110mm ø   |
| <b>SPB 723i</b>  | 720g     | 0.001g      | 110mm ø   |
| <b>SPB 1203i</b> | 1200g    | 0.001g      | 110mm ø   |
| <b>SPB 2103i</b> | 2100g    | 0.001g      | 110mm ø   |
| <b>STB 3202i</b> | 3200g    | 0.01g       | 185x185mm |
| <b>STB 6202i</b> | 6200g    | 0.01g       | 185x185mm |



### ACCESSORIES

| Item number | Description                                       |
|-------------|---|
| 1060014262  | Density kit for balance up to 0.0001g readability |
| 3012014260  | In-use cover                                      |
| 1120011156  | ATP thermal printer                               |
| 3014011014  | RS-232 cable M-F                                  |
| 700100046   | Kensington-type lock and cable                    |
| 600002028   | AdamDU Data Collection Program                    |
| 700660290   | Calibration certificate                           |
| 1120014641  | AIP impact printer                                |
| 700100007   | F1 100g calibration weight                        |
| 700100012   | F1 200g calibration weight                        |
| 700100008   | F1 500g calibration weight                        |
| 700100009   | F1 1kg calibration weight                         |
| 700100010   | F1 2kg calibration weight                         |
| 700100013   | F1 5kg Calibration Weight                         |



## FEATURES

- Vivid, backlit LCD easily visible in any lighting conditions
- Colour-coded keys facilitate quick recognition of the most frequently used buttons
- Level indicator and adjustable feet ensure proper balance setup for optimum weighing results
- Security slot for optional Kensington-type lock and cable to help prevent theft
- Large, grade 304 stainless steel pan allows easy cleaning
- Sealed keypad protects against dirt and spills
- USB and RS-232 interfaces provide speedy communication with computers and printers
- External calibration allows for verification and adjustment with weights
- Hold function freezes the displayed weight, allowing time to elapse without losing the result
- Multilingual display allows use in many different countries
- Parts counting with preset sample sizes
- Printouts include date and time for data tracking within Good Laboratory Practices (GLP) guidelines
- Selectable digital filtering for animal/dynamic weighing enables consistent results for moving subjects
- Auto power-off to save energy
- AC adapter included

## Performance and style for an impressive weighing experience

### GENERAL SPECIFICATIONS

- Weighing units: mg, g, ct, GN, dr, ozt, dwt, mm, tl.T, tl.H, tl.S, T, custom unit
- Interface: RS-232, USB
- Power Supply: 18VDC 50/60Hz 830mA adapter
- Display: Backlit LCD with 24mm-high digits
- Housing: ABS plastic
- Operating Temperature: 15° to 35°C
- Calibration: Internal automatic calibration / External calibration

### APPLICATIONS

- Weighing
- Parts counting
- Percentage weighing
- Dynamic / animal weighing
- Density determination
- Checkweighing
- Check counting
- Net total weighing
- Display hold
- Peak hold

| Model      | Capacity | Readability | Pan Size  |
|------------|----------|-------------|-----------|
| LAB 84e    | 80g      | 0.0001g     | 90mm ø    |
| LAB 124e   | 120g     | 0.0001g     | 90mm ø    |
| LAB 214e   | 210g     | 0.0001g     | 90mm ø    |
| LAB 254e   | 250g     | 0.0001g     | 90mm ø    |
| LAB 84i    | 80g      | 0.0001g     | 90mm ø    |
| LAB 124i   | 120g     | 0.0001g     | 90mm ø    |
| LAB 214i   | 210g     | 0.0001g     | 90mm ø    |
| LAB 254i   | 250g     | 0.0001g     | 90mm ø    |
| LPB 223e   | 220g     | 0.001g      | 120mm ø   |
| LPB 423e   | 420g     | 0.001g      | 120mm ø   |
| LPB 623e   | 620g     | 0.001g      | 120mm ø   |
| LPB 823e   | 820g     | 0.001g      | 120mm ø   |
| LPB 223i   | 220g     | 0.001g      | 120mm ø   |
| LPB 423i   | 420g     | 0.001g      | 120mm ø   |
| LPB 623i   | 620g     | 0.001g      | 120mm ø   |
| LPB 823i   | 820g     | 0.001g      | 120mm ø   |
| LTB 2602e  | 2600g    | 0.01g       | 185x185mm |
| LTB 3602e  | 3600g    | 0.01g       | 185x185mm |
| LTB 4602e  | 4600g    | 0.01g       | 185x185mm |
| LTB 6002e  | 6000g    | 0.01g       | 185x185mm |
| LTB 2602i  | 2600g    | 0.01g       | 185x185mm |
| LTB 3602i  | 3600g    | 0.01g       | 185x185mm |
| LTB 4602i  | 4600g    | 0.01g       | 185x185mm |
| LTB 6002i  | 6000g    | 0.01g       | 185x185mm |
| LBB 6001e  | 6000g    | 0.1g        | 185x185mm |
| LBB 8001e  | 8000g    | 0.1g        | 185x185mm |
| LBB 12001e | 12000g   | 0.1g        | 185x185mm |
| LBB 15001e | 15000g   | 0.1g        | 185x185mm |

### ACCESSORIES

| Item number | Description                    |            |                                      |
|-------------|--------------------------------|------------|--------------------------------------|
| 104008036   | Anti-vibration table           | 700660290  | Calibration certificate              |
| 3074010267  | USB cable                      | 1120014641 | AIP impact printer                   |
| 3012014259  | In-use cover                   | 700100410  | ABI-1 Ioniser                        |
| 1120011156  | ATP thermal printer            | 700100207  | E2 1g to 200g calibration weight set |
| 3014011014  | RS-232 cable M-F               | 700100232  | E2 50g calibration weight            |
| 700100046   | Kensington-type lock and cable | 700100022  | E2 100g calibration weight           |
| 600002028   | AdamDU Data Collection Program | 700100023  | E2 200g calibration weight           |
|             |                                | 700100026  | E2 1mg - 200g calibration weight set |

## FEATURES



- Vivid, backlit LCD easily visible in any lighting conditions
- Colour-coded keys facilitate quick recognition of the most frequently used buttons
- Level indicator and adjusting feet ensure proper balance setup for optimum weighing results
- Robust metal housing protects internal components in harsh environments
- Sealed keypad protects against dirt and accidental spills
- USB and RS-232 interfaces provide speedy communication with computers and printers
- Large, grade 304 stainless steel pan allows easy cleaning
- Lockdown device to secure balance
- External calibration allows for verification and adjustment with weights
- Printouts include date and time for data tracking within Good Laboratory Practices (GLP) guidelines
- Selectable digital filtering helps minimise effects of vibration and disturbances
- Zero-tracking feature ensures display returns to zero reading
- Multilingual display allows use in many different countries
- AC adapter included
- NBLe models are bench type, NBLp models are pillar type

*Innovative design combined with powerful performance in a premier balance*

## GENERAL SPECIFICATIONS

- Weighing units: g, mg, kg, ct, GN, N, oz, ozt, dwt, T, custom unit
- Interface: RS-232, USB
- Power Supply: 18VDC 50/60Hz 830mA adapter
- Display: Backlit LCD with 20mm-high digits
- Calibration: External and internal calibration
- Housing: Extruded aluminum base with a die-cast aluminum case
- Operating Temperature: 15° to 35°C

## APPLICATIONS

- Weighing
- Parts counting
- Percentage weighing
- Dynamic / animal weighing
- Density determination

| Model             | Capacity | Readability | Pan Size  |
|-------------------|----------|-------------|-----------|
| <b>NBL 12001e</b> | 12000g   | 0.1g        | 400x300mm |
| <b>NBL 16001e</b> | 16000g   | 0.1g        | 400x300mm |
| <b>NBL 22001e</b> | 22000g   | 0.1g        | 400x300mm |
| <b>NBL 32001e</b> | 32000g   | 0.1g        | 400x300mm |
| <b>NBL 12001P</b> | 12000g   | 0.1g        | 400x300mm |
| <b>NBL 16001P</b> | 16000g   | 0.1g        | 400x300mm |
| <b>NBL 22001P</b> | 22000g   | 0.1g        | 400x300mm |
| <b>NBL 32001P</b> | 32000g   | 0.1g        | 400x300mm |



## ACCESSORIES

| Item number | Description                        |
|-------------|------------------------------------|
| 104008036   | Anti-vibration table               |
| 3074010267  | USB cable                          |
| 3012013012  | In-use wet cover for 400x300mm pan |
| 1120011156  | ATP thermal printer                |
| 3014011014  | RS-232 cable M-F                   |
| 600002028   | AdamDU Data Collection Program     |
| 302126013   | Weigh-below hook for 400x300mm pan |
| 700660290   | Calibration certificate            |
| 1120014641  | AIP impact printer                 |
| 3014013041  | Security cable                     |
| 700100009   | F1 1kg Calibration Weight          |
| 700100010   | F1 2kg Calibration Weight          |
| 700100013   | F1 5kg Calibration Weight          |



104008036



1120011156



# HIGHLAND® PORTABLE PRECISION BALANCES



## FEATURES

- Vivid, backlit LCD easily visible in any lighting conditions
- Programmable backlight can be set to "always on," "always off" or "light only when weighing"
- Capacity tracker built into display for easily monitoring possible overloads
- Balances stack efficiently and safely to save space (120mm pan size only)
- Colour-coded keys facilitate quick recognition of the most frequently used buttons
- Dual tare keys facilitate operation with either the left or right hand
- Level indicator and adjustable feet ensure proper balance setup for optimum weighing results
- Security slot for optional Kensington-type lock and cable to help prevent theft
- Large, grade 304 stainless steel pan allows easy cleaning
- RS-232 interface for connection to computers and printers
- USB interface included for faster data communication
- Solid ABS housing is durable for industrial uses
- Three-point ShockProtect® feature helps prevent overload damage to internal components
- Hook included for weighing below the balance
- Internal calibration eliminates need for external weight set
- Audible overload alarm warns when capacity has been exceeded
- External calibration allows for verification and adjustment with weights
- Selectable digital filtering helps minimise effects of vibration and disturbances
- Parts counting with preset sample sizes
- Memory accumulation totals results
- Zero-tracking feature ensures display returns to zero reading
- AC adapter included
- Rechargeable battery included for operation almost anywhere
- Programmable auto power-off to save energy

*Full of features, the Highland is an exceptional value in precision weighing*

## GENERAL SPECIFICATIONS

- Weighing units: g, lb, oz, N, GN, ct, dr, dwt, mm, ozt, T, t.l.H, t.l.S, t.l.T (HCB-M: g, ct only)
- Interface: RS-232 / USB
- Power Supply: 12VDC 50/60Hz 800mA adapter / Internal rechargeable battery
- Display: Backlit LCD with 18mm-high digits
- Calibration: External calibration / Internal manual calibration (HCB-M: External calibration only)
- Housing: ABS plastic
- Operating Temperature: 0° to 40°C
- EC approved models approved with NMI (Holland) and NMO (UK)

## APPLICATIONS

- Weighing
- Parts counting
- Percentage weighing
- Accumulation of weight

| Model           | Capacity | Readability | Pan Size |
|-----------------|----------|-------------|----------|
| <b>HCB 123</b>  | 120g     | 0.001g      | 120mm ø  |
| <b>HCB 153</b>  | 150g     | 0.005g      | 120mm ø  |
| <b>HCB 302</b>  | 300g     | 0.01g       | 120mm ø  |
| <b>HCB 602</b>  | 600g     | 0.02g       | 120mm ø  |
| <b>HCB 602H</b> | 600g     | 0.01g       | 120mm ø  |
| <b>HCB 1002</b> | 1000g    | 0.01g       | 120mm ø  |
| <b>HCB 1502</b> | 1500g    | 0.05g       | 120mm ø  |
| <b>HCB 2202</b> | 2200g    | 0.01g       | 120mm ø  |
| <b>HCB 3001</b> | 3000g    | 0.1g        | 120mm ø  |
| <b>HCB 6001</b> | 6000g    | 0.1g        | 145mm ø  |

## Approved Models EC Type Approved

| Model            | Capacity | Readability | Pan Size |
|------------------|----------|-------------|----------|
| <b>HCB 602M</b>  | 600g     | 0.01g       | 120mm ø  |
| <b>HCB 1002M</b> | 1000g    | 0.01g       | 120mm ø  |
| <b>HCB 5001M</b> | 5000g    | 0.1g        | 120mm ø  |



## ACCESSORIES

| Item number | Description                              |
|-------------|--|
| 3074010267  | USB cable                                |
| 308002042   | Hard carrying case with lock for CQT/HCB |
| 308232034   | In-use cover (pack of 5)                 |
| 308232035   | In-use cover (pack of 10)                |
| 308232030   | In-use cover                             |
| 1120011156  | ATP thermal printer                      |
| 1120014641  | AIP impact printer                       |
| 3074010266  | RS-232 cable (null-modem)                |
| 700100046   | Kensington-type lock and cable           |
| 600002028   | AdamDU Data Collection Program           |
| 700660290   | Calibration certificate                  |
| 700100007   | F1 100g Calibration Weight               |

|           |                            |
|-----------|----------------------------|
| 700100012 | F1 200g Calibration Weight |
| 700100009 | F1 1kg Calibration Weight  |
| 700100010 | F1 2kg Calibration Weight  |
| 700100013 | F1 5kg Calibration Weight  |



308002042



1120011156



700100046



## FEATURES

- Vivid, backlit LCD easily visible in any lighting conditions
- Level indicator and adjustable feet ensure proper balance setup for optimum weighing results
- Colour-coded keys facilitate quick recognition of the most frequently used buttons
- Large, grade 304 stainless steel pan allows easy cleaning
- RS-232 interface is available to provide speedy connection to computers and printers
- Solid ABS housing is durable for industrial use
- Simple key operation allows for easy set up and operation
- External calibration allows for verification and adjustment with weights
- Zero-tracking feature ensures display returns to zero reading
- AC adapter included

*Compact and easy to use, the Strata provides value and durability for a variety of applications*

## GENERAL SPECIFICATIONS

- Capacity: 100g to 6000g
- Readability: 0.001g to 1g
- Weighing units: g, lb, oz, ct, dr, ozt, GN, N, tL.T, tL.H, tL.S
- Interface: RS-232
- Power Supply: 12VAC 50/60Hz 150mA adapter / 6 x AA batteries
- Display: Backlit LCD with 18mm-high digits
- Calibration: External calibration
- Housing: ABS plastic
- Operating Temperature: 0° to 40°C

## APPLICATIONS

- Weighing
- Percent weighing
- Parts counting
- Totalisation
- Below Balance Weighing
- Weight Accumulation

| Model           | Capacity | Readability | Pan Size |
|-----------------|----------|-------------|----------|
| <b>SCB 100</b>  | 100g     | 0.001g      | 120mm ø  |
| <b>SCB 200</b>  | 200g     | 0.01g       | 120mm ø  |
| <b>SCB 400</b>  | 400g     | 0.01g       | 120mm ø  |
| <b>SCB 800</b>  | 800g     | 0.01g       | 120mm ø  |
| <b>SCB 300</b>  | 300g     | 1g          | 120mm ø  |
| <b>SCB 500</b>  | 500g     | 0.1g        | 120mm ø  |
| <b>SCB 2000</b> | 2000g    | 0.1g        | 120mm ø  |
| <b>SCB 4000</b> | 4000g    | 0.1g        | 120mm ø  |
| <b>SCB 6000</b> | 6000g    | 1g          | 120mm ø  |



*\*These products are shipped from China only*

## ACCESSORIES

| Item number | Description  |
|-------------|--|
| 308002042   | Hard Carry Case with Lock                          |
| 700100046   | Security Lock and Cable                            |
| 1120011156  | ATP Thermal Printer                                |
| 3126011263  | Thermal Paper for ATP                              |
| 1120014641  | AIP Printer  |
| 3126014659  | Printer Roll 57mm for AIP                          |
| 3126014660  | Printer Roll 57mm (pack of 10) for AIP             |
| 3074010266  | RS-232 Cable                                       |
| 600002028   | AdamDU - Data Collection Program                   |
| 700100007   | F1 100g Calibration Weight for SCB 100             |
| 700100012   | F1 200g Calibration Weight for SCB 200 and SCB 400 |
| 700100008   | F1 500g Calibration Weight for SCB 800             |
| 700100072   | M1 200g Calibration Weight for SCB 300 and SCB 500 |
| 700100029   | M1 1kg Calibration Weight for SCB 2000             |
| 700100010   | F1 2kg Calibration Weight for SCB 4000             |
| 700100030   | M1 2kg Calibration Weight for SCB 6000             |



## FEATURES

- Vivid, backlit LCD easily visible in any lighting conditions
- Programmable backlight can be set to “always on,” “always off” or “light only when weighing”
- Balances stack efficiently and safely to save space (120mm pan size only)
- Colour-coded keys facilitate quick recognition of the most frequently used buttons
- Dual tare keys facilitate operation with either the left or right hand
- Security slot for optional Kensington-type lock and cable to help prevent theft
- Large, grade 304 stainless steel pan allows easy cleaning
- Rugged construction stands up to industrial use
- Three-point ShockProtect<sup>®</sup> feature helps prevent overload damage to internal components
- Hook included for weighing below the balance
- Auto power-off to save energy
- Audible overload alarm warns when capacity has been exceeded
- External calibration allows for verification and adjustment with weights
- Zero-tracking feature ensures display returns to zero reading
- Operates with AC adapter (included) or batteries (not included)

*The most durable compact balance in its class, the Core is unmatched in value*

## GENERAL SPECIFICATIONS

- Weighing units: g, kg, lb, oz, N, GN, ct, dr, tL.T
- Power Supply: 12VAC 50/60Hz 150mA adapter / 6 x AA batteries
- Display: Backlit LCD with 18mm-high digits
- Calibration: External calibration
- Housing: ABS plastic
- Operating Temperature: 0° to 40°C

| Model           | Capacity | Readability | Pan Size |
|-----------------|----------|-------------|----------|
| <b>CQT 202</b>  | 200g     | 0.01g       | 120mm ø  |
| <b>CQT 251</b>  | 250g     | 0.1g        | 120mm ø  |
| <b>CQT 601</b>  | 600g     | 0.1g        | 120mm ø  |
| <b>CQT 1501</b> | 1500g    | 0.1g        | 120mm ø  |
| <b>CQT 2000</b> | 2000g    | 1g          | 145mm ø  |
| <b>CQT 2601</b> | 2600g    | 0.1g        | 145mm ø  |
| <b>CQT 5000</b> | 5000g    | 1g          | 145mm ø  |

## APPLICATIONS

- Weighing



## ACCESSORIES

| Item number | Description                              |
|-------------|--|
| 308002042   | Hard carrying case with lock for CQT/HCB |
| 308232033   | In-use cover                             |
| 308232036   | In-use cover (pack of 5)                 |
| 308232037   | In-use cover (pack of 10)                |
| 700100046   | Kensington-type lock and cable           |
| 700660290   | Calibration certificate                  |
| 700100012   | F1 200g calibration weight               |
| 700100072   | M1 200g calibration weight               |
| 700100060   | M1 500g calibration weight               |
| 700100029   | M1 1kg calibration weight                |
| 700100030   | M1 2kg calibration weight                |
| 700100071   | M1 1g - 2kg calibration weight set       |
| 700100035   | M1 1g - 100g calibration weight set      |



700100046



700100071



308002042



## FEATURES

- High-contrast display is easily visible from a distance
- Colour-coded keys facilitate quick recognition of the most frequently used buttons
- Lightweight design simplifies transport and portability
- Overload protection helps prevent damage to internal components
- Sealed keypad protects against dirt and accidental spills
- Large platform removes easily for speedy cleaning
- Auto power-off to save energy
- External calibration allows for verification and adjustment with weights
- Zero-tracking feature ensures display returns to zero reading
- Operates with AC adapter (included) or batteries (not included)

*Streamlined design for basic weighing in the lab, classroom or field*

## GENERAL SPECIFICATIONS

- Weighing units: g, oz
- Power Supply: 12VAC 50/60Hz 150mA adapter / 6 x AA batteries
- Display: LCD with 15mm-high digits
- Calibration: External calibration
- Housing: ABS plastic
- Operating Temperature: 0° to 40°C

| Model           | Capacity | Readability | Pan Size  |
|-----------------|----------|-------------|-----------|
| <b>DCT 302</b>  | 300g     | 0.01g       | 100mm ø   |
| <b>DCT 201</b>  | 200g     | 0.1g        | 145x145mm |
| <b>DCT 601</b>  | 600g     | 0.1g        | 145x145mm |
| <b>DCT 2001</b> | 2000g    | 0.1g        | 145x145mm |
| <b>DCT 2000</b> | 2000g    | 1g          | 145x145mm |
| <b>DCT 5000</b> | 5000g    | 2g          | 145x145mm |



## APPLICATIONS

- Weighing

## ACCESSORIES

| Item number | Description                |
|-------------|----------------------------|
| 700660290   | Calibration certificate    |
| 700100012   | F1 200g calibration weight |
| 700100010   | F1 2kg calibration weight  |
| 700100072   | M1 200g calibration weight |
| 700100060   | M1 500g calibration weight |
| 700100030   | M1 2kg calibration weight  |



## FEATURES

- Vivid, backlit LCD easily visible in any lighting conditions
- Large, grade 304 stainless steel pan allows easy cleaning
- Lightweight design simplifies transport and portability
- Sealed keypad protects against dirt and spills
- Level indicator and adjustable feet ensure proper balance setup for optimum weighing results
- Auto power-off to save energy
- External calibration allows for verification and adjustment with weights
- Simple operation allows quick startup and use with little or no training
- Zero-tracking feature ensures display returns to zero reading
- Low-battery indicator alerts users when batteries need replacement

*Provides features and consistency for portable performance*

## GENERAL SPECIFICATIONS

- Weighing units: g, lb, oz
- Power Supply: 2 x AA batteries / Optional 6VDC 200mA adapter
- Display: LCD with 12mm-high digits
- Calibration: External calibration
- Housing: ABS plastic
- Operating Temperature: 0° to 40°C

| Model          | Capacity | Readability | Pan Size |
|----------------|----------|-------------|----------|
| <b>CB 501</b>  | 500g     | 0.1g        | 130mm ø  |
| <b>CB 1001</b> | 1000g    | 0.1g        | 130mm ø  |
| <b>CB 3000</b> | 3000g    | 1g          | 130mm ø  |



## APPLICATIONS

- Weighing

## ACCESSORIES

| Item number | Description                |
|-------------|----------------------------|
| 700400120   | 6VDC 200mA adapter         |
| 700230015   | In-use cover               |
| 700660290   | Calibration certificate    |
| 700100060   | M1 500g calibration weight |
| 700100029   | M1 1kg calibration weight  |
| 700100030   | M1 2kg calibration weight  |



## FEATURES

- Vivid, backlit LCD easily visible in any lighting conditions
- Programmable backlight can be set to “always on,” “always off” or “light only when weighing”
- Capacity tracker built into display for easily monitoring possible overloads
- Scratch-resistant aluminum housing protects internal components
- Colour-coded keys facilitate quick recognition of the most frequently used buttons
- Pan lifter allows easy placement and removal of samples
- RS-232 interface for connection to computers and printers
- USB host for memory card and USB I/O interface
- USB interface included for faster data communication
- Temperature range 50°C to 160°C in one-degree increments
- Three settings for heating sample include ramp-up, stepped temperatures and single temperature
- Seven preset drying modes allow test routines for several products
- Audible overload alarm warns when capacity has been exceeded
- Testing can be set to start automatically when lid closes
- Calibration for temperature and weight
- Multilingual display allows use in many different countries
- Quick and easy configuration using the keypad
- Zero-tracking feature ensures display returns to zero reading
- Internal memory stores 49 different recipes and up to 99 test results, and additional test results and settings can be stored on a flash drive
- Mains power cord

**Superior connectivity in a moisture analyser, with two USB ports for data collection and computer or printer communications**

## GENERAL SPECIFICATIONS

- Weighing units: g, %M, %S, ATRO %M, ATRO %S
- Interface: RS-232 / USB
- Power Supply: Mains power cord
- Display: Backlit LCD with 24mm-high digits
- Calibration: External calibration
- Housing: Die-cast aluminum
- Operating Temperature: 0° to 40°C

| Model          | Capacity | Readability    | Pan Size |
|----------------|----------|----------------|----------|
| <b>PMB 53</b>  | 50g      | 0.001g / 0.01% | 100mm ø  |
| <b>PMB 163</b> | 160g     | 0.001g / 0.01% | 100mm ø  |
| <b>PMB 202</b> | 200g     | 0.01g / 0.05%  | 100mm ø  |



## APPLICATIONS

- Weighing
- Moisture determination

## ACCESSORIES

| Item number | Description                          |
|-------------|--------------------------------------|
| 104008036   | Anti-vibration table                 |
| 3074010267  | USB cable                            |
| 1070010636  | Temperature calibration kit          |
| 301208188   | In-use cover                         |
| 3070013622  | PMB glass fibre pads (pack of 200)   |
| 1120011156  | ATP thermal printer                  |
| 3074010266  | RS-232 cable (null-modem)            |
| 307140001   | Disposable sample pans (pack of 250) |
| 700100046   | Kensington-type lock and cable       |
| 600002028   | AdamDU Data Collection Program       |
| 700660290   | Calibration certificate              |
| 1120014641  | AIP impact printer                   |
| 700100014   | F1 50g calibration weight            |
| 700100007   | F1 100g calibration weight           |
| 700100012   | F1 200g calibration weight           |
| 700100027   | F1 1g - 100g calibration weight set  |



1070010636



1120011156



307140001

# PMB Glass Fibre Pads



## FEATURES

- 90mm wide glass fibre pads
- Borosilicate glass micro fiber with a density of 80g/M2
- Binder free with a constant tare weight
- Prevents skin from forming on the sample surface

| Part Number | Model                              |
|-------------|------------------------------------|
| 3070013622  | PMB Glass Fibre Pads (pack of 200) |

# PMB Temperature Calibration kit



## Technical Specifications

| Model                        | PMB Temperature Calibration Kit |
|------------------------------|---------------------------------|
| <b>Power Supply</b>          | Battery - 1.5v DC               |
| <b>Display Value</b>         | 0.1°C                           |
| <b>Operating Temperature</b> | -50°C to 300°C                  |



Cushioned Carry Case

| Part Number | Model                       |
|-------------|-----------------------------|
| 1070010636  | Temperature Calibration Kit |



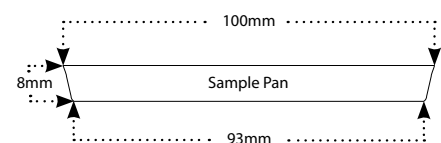
# PMB Moisture Sample Pans



Available in packs of 250

## Technical Specifications

| Model               | PMB Sample Pans   |
|---------------------|---|
| <b>Pan Size</b>     | 100mm ø<br>Top - 100mm - wide<br>Depth - 8mm - height<br>Bottom - 93mm - wide |
| <b>Pan Material</b> | Aluminium   |



| Part Number | Model                                |
|-------------|--------------------------------------|
| 307140001   | Disposable Sample Pans (pack of 250) |



## FEATURES

- Optional hook enables below-balance weighing
- Security slot for optional Kensington-type lock and cable to help prevent theft
- Large, grade 304 stainless steel pan allows easy cleaning
- Magnetic damping slows pointer movement for faster readings
- Notched, tiered, graduated beams ensure positive positioning and accurate reading of results
- Storing space for weights included
- The TBB 2610T is equipped with a 225g tare range

*A reliable, classic balance for performing mass measurement*

## GENERAL SPECIFICATIONS

- Weighing units: g
- Display: Graduated beam
- Calibration: External calibration
- Housing: Die-cast aluminum

| Model            | Capacity | Readability | Pan Size |
|------------------|----------|-------------|----------|
| <b>TBB 2610S</b> | 2610g    | 0.1g        | 152mm ø  |
| <b>TBB 2610T</b> | 2610g    | 0.1g        | 152mm ø  |



## APPLICATIONS

- Weighing

## ACCESSORIES

| Item number | Description                    |
|-------------|--------------------------------|
| 700100046   | Kensington-type lock and cable |
| 3021210953  | Weigh-below hook               |



700100046





## FEATURES

- Bright LED display for easy viewing in most environments
- Rotating hook allows easy access while loading, then safely locks in place during weighing
- Lightweight design simplifies transport and portability
- Rugged construction stands up to industrial use
- Remote control allows safe, hands-free operation
- External calibration allows for verification and adjustment with weights
- Hold function freezes the displayed weight, allowing time to lapse without losing the result
- Zero-tracking feature ensures display returns to zero reading
- Programmable auto power-off to save energy

*Bringing strength and safety to the forefront of industrial settings*

## GENERAL SPECIFICATIONS

- Weighing units: kg, lb, N
- Power Supply: AC adapter / 4 x AA batteries / Internal rechargeable battery
- Display: LED with 15mm-high digits
- Calibration: External calibration
- Housing: Polycarbonate
- Operating Temperature: 0° to 40°C

| Model          | Capacity | Readability |
|----------------|----------|-------------|
| <b>SHS 50</b>  | 50kg     | 0.01kg      |
| <b>SHS 150</b> | 150kg    | 0.02kg      |
| <b>SHS 300</b> | 300kg    | 0.05kg      |



## APPLICATIONS

- Weighing

Adam Equipment Co. Ltd., its directors, staff, owners and affiliated companies and organisations cannot be held liable for any resulting damage or injury sustained as a result of the machines being used in excess of their capacities and ultimate overload limits.

## ACCESSORIES

| Item number | Description             |
|-------------|-------------------------|
| 700660290   | Calibration certificate |



## FEATURES

- Bright LED display for easy viewing in most environments
- Rotating hook allows easy access while loading, then safely locks in place during weighing
- Lightweight design simplifies transport and portability
- Remote control allows safe, hands-free operation
- Rugged construction stands up to industrial use
- External calibration allows for verification and adjustment with weights
- Hold function freezes the displayed weight, allowing time to lapse without losing the result
- Zero-tracking feature ensures display returns to zero reading
- Programmable auto power-off to save energy

*Suitable for weighing moderate loads, LHS delivers durability in a hanging scale*

## GENERAL SPECIFICATIONS

- Weighing units: kg, lb, N
- Power Supply: AC adapter / Internal rechargeable battery
- Display: LED with 25mm-high digits
- Calibration: External calibration
- Housing: Die-cast aluminum
- Operating Temperature: 0° to 40°C

| Model           | Capacity | Readability |
|-----------------|----------|-------------|
| <b>LHS 500</b>  | 500kg    | 0.1kg       |
| <b>LHS 1500</b> | 1500kg   | 0.2kg       |
| <b>LHS 2000</b> | 2000kg   | 0.5kg       |



## APPLICATIONS

- Weighing

Adam Equipment Co. Ltd., its directors, staff, owners and affiliated companies and organisations cannot be held liable for any resulting damage or injury sustained as a result of the machines being used in excess of their capacities and ultimate overload limits.

## ACCESSORIES

| Item number | Description             |
|-------------|-------------------------|
| 700660290   | Calibration certificate |



## FEATURES

- Bright LED display for easy viewing in most environments
- Rotating hook allows easy access while loading, then safely locks in place during weighing
- Remote control allows safe, hands-free operation
- Sealed keypad protects against dirt and accidental spills
- Solid metal housing resists spills and protects internal components
- Auto power-off to save energy
- Rechargeable battery included for operation almost anywhere
- AC adapter included

***When strength and safety are essential, IHS is the overwhelming winner to weigh suspended loads***

## GENERAL SPECIFICATIONS

- Weighing units: kg
- Power Supply: 7.2VDC 50/60Hz 2A adapter / Internal rechargeable battery
- Display: LED with 30mm-high digits
- Calibration: External calibration
- Housing: Die-cast aluminum
- Operating Temperature: 0° to 40°C

## APPLICATIONS

- Weighing

| Model         | Capacity | Readability |
|---------------|----------|-------------|
| <b>IHS 1</b>  | 1000kg   | 0.2kg       |
| <b>IHS 3</b>  | 3000kg   | 0.5kg       |
| <b>IHS 5</b>  | 5000kg   | 1kg         |
| <b>IHS 10</b> | 10000kg  | 2kg         |



Adam Equipment Co. Ltd., its directors, staff, owners and affiliated companies and organisations cannot be held liable for any resulting damage or injury sustained as a result of the machines being used in excess of their capacities and ultimate overload limits.

## ACCESSORIES

| Item number | Description             |
|-------------|-------------------------|
| 700660290   | Calibration certificate |



## FEATURES

- Vivid, backlit LCD easily visible in any lighting conditions
- Adjustable levelling feet help optimise setup
- Colour-coded keys facilitate quick recognition of the most frequently used buttons
- Large, grade 304 stainless steel pan allows easy cleaning
- Overload protection helps prevent damage to internal components
- Rugged stainless steel housing for ultimate durability
- Sealed keypad protects against dirt and spills
- Splash-proof housing, keypad and display mean easy cleaning
- Auto power-off to save energy
- External calibration allows for verification and adjustment with weights
- Operates with AC adapter (included) or batteries (not included)
- Low-battery indicator alerts users when batteries need replacement

*Sleekly designed, the compact Astro is easy to clean between weighing tasks*

## GENERAL SPECIFICATIONS

- Weighing units: g, kg, lb, lb:oz, oz
- Power Supply: 6VDC 500mA adapter / 2 x AAA batteries
- Display: LCD with 18mm-high digits
- Calibration: External calibration
- Housing: Stainless steel
- Operating Temperature: 0° to 40°C

| Model           | Capacity | Readability | Pan Size  |
|-----------------|----------|-------------|-----------|
| <b>ASC 2001</b> | 2000g    | 0.1g        | 160x180mm |
| <b>ASC 4000</b> | 4000g    | 0.5g        | 160x180mm |
| <b>ASC 8000</b> | 8000g    | 1g          | 160x180mm |



## APPLICATIONS

- Weighing

## ACCESSORIES

| Item number | Description             |
|-------------|-------------------------|
| 700660290   | Calibration certificate |

# LATITUDE COMPACT BENCH SCALES



## FEATURES

- Vivid, backlit LCD easily visible in any lighting conditions
- Checkweighing LEDs clearly show under, over and acceptable limits
- Overload protection helps prevent damage to internal components
- Rugged construction stands up to industrial use
- Sealed keypad protects against dirt and spills
- Simple key operation allows for easy set up and operation
- Large, grade 304 stainless steel pan allows easy cleaning
- Adjustable levelling feet help optimise setup
- External calibration allows for verification and adjustment with weights
- Checkweighing with audible alarm
- Hold function freezes the displayed weight, allowing time to elapse without losing the result
- Rechargeable battery included for operation almost anywhere
- Programmable auto power-off to save energy
- Battery level is clearly displayed to show the user when the scale needs to be recharged
- Operates with a low voltage USB input providing flexibility for powering the device

*Multi-function portable scale provides fast results*

## GENERAL SPECIFICATIONS

- Weighing units: g, kg, lb, lb:oz, oz
- Power Supply: 5VDC 1A adapter / Internal rechargeable battery
- Display: Backlit LCD with 24mm -high digits
- Calibration: External calibration
- Housing: ABS plastic
- Operating Temperature: 0° to 40°C

## APPLICATIONS

- Weighing
- Parts counting
- Percentage weighing
- Checkweighing
- Display hold

| Model         | Capacity | Readability | Pan Size  |
|---------------|----------|-------------|-----------|
| <b>LBX 3</b>  | 3kg      | 0.5g        | 245x180mm |
| <b>LBX 6</b>  | 6kg      | 1g          | 245x180mm |
| <b>LBX 12</b> | 12kg     | 2g          | 245x180mm |
| <b>LBX 30</b> | 30kg     | 5g          | 245x180mm |

| Model          | Capacity | Readability | Pan Size      |
|----------------|----------|-------------|---------------|
| <b>LBX-3H</b>  | 3000g    | 0.1g        | 245mm x 175mm |
| <b>LBX-6H</b>  | 6000g    | 0.2g        | 245mm x 175mm |
| <b>LBX-15H</b> | 15kg     | 0.5g        | 245mm x 175mm |
| <b>LBX-30H</b> | 30kg     | 1g          | 245mm x 175mm |



## ACCESSORIES

| Item number | Description                  |
|-------------|------------------------------|
| 3002014371  | Hard carrying case with lock |
| 2020014062  | In-use cover (pack of 5)     |
| 2020014063  | In-use cover (pack of 10)    |
| 3022014061  | In-use cover                 |
| 303149759   | Vegetable Scoop              |
| 303149760   | Confectionery Scoop          |
| 700660290   | Calibration certificate      |



303149759



303149760



## FEATURES

- Colour-coded keys facilitate quick recognition of the most frequently used buttons
- Large, grade 304 stainless steel pan allows easy cleaning
- RS-232 interface is available to provide speedy connection to computers and printers
- Optional USB interface simplifies data communication
- Sealed keypad protects against dirt and spills
- Solid ABS housing is durable for industrial use
- Adjustable levelling feet help optimise setup
- Drip channels help divert spills away from the scales internal components
- Checkweighing with audible alarm
- External calibration allows for verification and adjustment with weights
- Internal counting resolution 1:600,000 for precise results
- Parts counting with freely selectable sample sizes
- Preset tare function speeds the process of repetitive weighing
- Product look up (PLU) memory locations store a range of items for recall
- Programmable auto power-off to save energy
- Rechargeable battery included for operation almost anywhere
- Large colour changing LCD display with variable light intensity

## The Cruiser delivers powerful performance for industrial applications

### GENERAL SPECIFICATIONS

- Weighing units: g, kg, lb, oz, lb:oz
- Interface: RS-232, Optional USB
- Power Supply: 12VDC 50/60Hz 800mA adapter / Internal rechargeable battery
- Display: Backlit LCD with 15mm -high digits
- Calibration: External calibration
- Housing: ABS plastic
- Operating Temperature: -10° to 40°C
- EC approved models approved with NMI (Holland) and NMO (UK)

### APPLICATIONS

- Weighing
- Parts counting
- Checkweighing
- Check counting
- Accumulation of weight
- Percentage weighing
- Net total weighing

| Model    | Capacity | Readability | Pan Size  |
|----------|----------|-------------|-----------|
| CKT 4    | 4kg      | 0.1g        | 210x300mm |
| CKT 8    | 8kg      | 0.2g        | 210x300mm |
| CKT 16   | 16kg     | 0.5g        | 210x300mm |
| CKT 32   | 32kg     | 1g          | 210x300mm |
| CKT 48   | 48kg     | 2g          | 210x300mm |
| CKT 8H   | 8kg      | 0.1g        | 210x300mm |
| CKT 8UH  | 8kg      | 0.05g       | 210x300mm |
| CKT 16UH | 16kg     | 0.1g        | 210x300mm |
| CKT 32UH | 32kg     | 0.2g        | 210x300mm |
| CKT 48UH | 48kg     | 0.5g        | 210x300mm |

## Approved Models EC Type Approved

| Model   | Capacity | Readability | Pan Size  |
|---------|----------|-------------|-----------|
| CKT 4M  | 4kg      | 1g          | 210x300mm |
| CKT 8M  | 8kg      | 2g          | 210x300mm |
| CKT 20M | 20kg     | 5g          | 210x300mm |
| CKT 40M | 40kg     | 10g         | 210x300mm |



### ACCESSORIES

| Item number | Description                       |
|-------------|-----------------------------------|
| 3074010267  | USB cable                         |
| 302013912   | Hard carrying case with lock      |
| 2020013913  | In-use cover (pack of 5)          |
| 2020013914  | In-use cover (pack of 10)         |
| 3022013911  | In-use cover                      |
| 1120011156  | ATP thermal printer               |
| 1120014641  | AIP impact printer                |
| 3014011014  | RS-232 cable M-F                  |
| 600002028   | AdamDU Data Collection Program    |
| 202000001   | Weigh-below hook (factory-fitted) |
| 700660290   | Calibration certificate           |
| 2020013915  | USB option                        |



Pillar Model Available

*The most flexible series of scales, offering multiple configurations to suit a variety of applications*

## GENERAL SPECIFICATIONS

- Weighing units: kg, lb, lb:oz, oz
- Interface: RS-232
- Power Supply: 12VDC 50/60Hz 150mA adapter / 6 x AA batteries (300x300mm model only)
- Power Supply: 12VDC 50/60Hz 500mA adapter / Internal Rechargeable Battery (M & L models only)
- Display: Backlit LCD with 22mm-high digits
- Calibration: External calibration
- Housing: Mild steel base / Stainless Steel Top Pan
- Operating Temperature: 0° to 40°C

## APPLICATIONS

- Weighing
- Display hold

## FEATURES

- Vivid, backlit LCD easily visible in any lighting conditions
- Programmable backlight can be set to “always on,” “always off” or “light only when weighing”
- Colour-coded keys facilitate quick recognition of the most frequently used buttons
- Large, grade 304 stainless steel pan allows easy cleaning
- Lightweight design simplifies transport and portability
- Rugged construction stands up to industrial use
- Splash-proof housing, keypad and display mean easy cleaning
- Wall-mount bracket for placing indicator on vertical surface
- Auto power-off to save energy
- External calibration allows for verification and adjustment with weights
- Hold function freezes the displayed weight, allowing time to lapse without losing the result
- Selectable digital filtering helps minimise effects of vibration and disturbances
- Zero-tracking feature ensures display returns to zero reading

| Model               | Capacity | Readability | Pan Size  |
|---------------------|----------|-------------|-----------|
| <b>CPWplus 6</b>    | 6kg      | 0.002kg     | 300x300mm |
| <b>CPWplus 15</b>   | 15kg     | 0.005kg     | 300x300mm |
| <b>CPWplus 35</b>   | 35kg     | 0.01kg      | 300x300mm |
| <b>CPWplus 75</b>   | 75kg     | 0.02kg      | 300x300mm |
| <b>CPWplus 150</b>  | 150kg    | 0.05kg      | 300x300mm |
| <b>CPWplus 200</b>  | 200kg    | 0.05kg      | 300x300mm |
| <b>CPWplus 35W</b>  | 35kg     | 10g         | 500x500mm |
| <b>CPWplus 75W</b>  | 75kg     | 20g         | 500x500mm |
| <b>CPWplus 150W</b> | 150kg    | 50g         | 500x500mm |
| <b>CPWplus 200W</b> | 200kg    | 50g         | 500x500mm |
| <b>CPWplus 35M</b>  | 35kg     | 0.01kg      | 500x500mm |
| <b>CPWplus 75M</b>  | 75kg     | 0.02kg      | 500x500mm |
| <b>CPWplus 150M</b> | 150kg    | 0.05kg      | 500x500mm |
| <b>CPWplus 200M</b> | 200kg    | 0.05kg      | 500x500mm |
| <b>CPWplus 35L</b>  | 35kg     | 0.01kg      | 900x600mm |
| <b>CPWplus 75L</b>  | 75kg     | 0.02kg      | 900x600mm |
| <b>CPWplus 150L</b> | 150kg    | 0.05kg      | 900x600mm |
| <b>CPWplus 200L</b> | 200kg    | 0.05kg      | 900x600mm |
| <b>CPWplus 300L</b> | 300kg    | 0.1kg       | 900x600mm |



## ACCESSORIES

| Item number | Description  |
|-------------|--|
| 700100099   | Hard carrying case with lock for CPWplus (300x300mm models only) |
| 112001156   | ATP thermal printer  |
| 700200059   | Non-slip rubber mat (CPWplus L only)                             |
| 3074010266  | RS-232 cable (null-modem)  |
| 3074010507  | RS-232 to USB adapter  |
| 600002028   | AdamDU Data Collection Program                                   |
| 700660290   | Calibration certificate  |
| 1120014641  | AIP impact printer   |



# GBK AND GFK BENCH CHECKWEIGHING SCALES



## FEATURES

- Vivid, backlit LCD easily visible in any lighting conditions
- Capacity tracker built into display for easily monitoring possible overloads
- Checkweighing LEDs light to clearly show under, over and acceptable limits
- Programmable backlight can be set to “always on,” “always off” or “light only when weighing”
- Colour-coded keys facilitate quick recognition of the most frequently used buttons
- Level indicator and adjusting feet ensure proper balance setup for optimum weighing results
- Large, grade 304 stainless steel pan allows easy cleaning
- RS-232 interface for connection to computers and printers
- Rugged construction stands up to industrial use
- Sealed keypad protects against dirt and spills
- Overload protection helps prevent damage to internal components
- Checkweighing with audible alarm
- External calibration allows for verification and adjustment with weights
- Memory accumulation totals results
- Parts counting with freely selectable sample sizes
- Parts counting optimisation automatically refines piece weight as parts are added
- Preset tare function speeds the process of repetitive weighing
- Selectable digital filtering helps minimise effects of vibration and disturbances
- Zero-tracking feature ensures display returns to zero reading
- Rechargeable battery included for operation almost anywhere
- Programmable auto power-off to save energy

*The best solution for demanding industrial and manufacturing tasks*

## GENERAL SPECIFICATIONS

- Weighing units: g, kg
- Interface: RS-232, Optional USB
- Power Supply: Mains power cord / Internal rechargeable battery
- Display: Backlit LCD with 20mm-high digits
- Calibration: External calibration
- Housing: Die-cast aluminum /Stainless Steel Top Pan
- Operating Temperature: -10° to 40°C

## APPLICATIONS

- Weighing
- Parts counting
- Percentage weighing
- Checkweighing
- Dynamic / animal weighing
- Accumulation of weight

| Model           | Capacity | Readability | Pan Size  |
|-----------------|----------|-------------|-----------|
| <b>GBK 8</b>    | 8kg      | 0.1g        | 300x400mm |
| <b>GBK 16</b>   | 16kg     | 0.5g        | 300x400mm |
| <b>GBK 32</b>   | 32kg     | 1g          | 300x400mm |
| <b>GBK 60</b>   | 60kg     | 2g          | 300x400mm |
| <b>GBK 120</b>  | 120kg    | 5g          | 300x400mm |
| <b>GFK 75</b>   | 75kg     | 5g          | 400x500mm |
| <b>GFK 75H</b>  | 75kg     | 1g          | 400x500mm |
| <b>GFK 150</b>  | 150kg    | 10g         | 400x500mm |
| <b>GFK 150H</b> | 150kg    | 2g          | 400x500mm |
| <b>GFK 300</b>  | 300kg    | 20g         | 400x500mm |
| <b>GFK 600</b>  | 600kg    | 50g         | 600x800mm |



## ACCESSORIES

| Item number | Description                               |
|-------------|---|
| 3074010267  | USB cable                                 |
| 3052010526  | In-use cover                              |
| 1120011156  | ATP thermal printer                       |
| 3074010266  | RS-232 cable (null-modem)                 |
| 3074010507  | RS-232 to USB adapter ( Must order Cable) |
| 600002028   | AdamDU Data Collection Program            |
| 700660290   | Calibration certificate                   |
| 1120014641  | AIP impact printer                        |



1120011156



600002028



# AGB AND AGF BENCH AND FLOOR SCALES



## FEATURES

- Backlit display changes colour for quick notification of checkweighing limits
- Colour-coded keys facilitate quick recognition of the most frequently used buttons
- Heavy-duty rubber feet ensure stability of unit
- Large, grade 304 stainless steel pan allows easy cleaning
- Rugged construction stands up to industrial use
- RS-232 interface is available to provide speedy connection to computers and printers
- External calibration allows for verification and adjustment with weights without losing the result
- IP67 -rated indicator
- Parts counting with preset sample sizes
- Preset tare function speeds the process of repetitive weighing
- Selectable digital filtering for animal/dynamic weighing enables consistent results for moving subjects
- EC type approved
- Rechargeable battery included for operation almost anywhere
- Programmable auto power-off to save energy

## GENERAL SPECIFICATIONS

- Weighing units: g, kg, N, lb, lb:oz, oz, custom unit
- Interface: RS-232
- Power Supply: 12VDC 50/60Hz 800mA adapter / Internal rechargeable battery
- Display: Backlit LCD with 40mm -high digits
- Calibration: External calibration
- Housing: Stainless steel indicator with die-cast aluminum base
- Operating Temperature: 0° to 40°C

## APPLICATIONS

- Weighing
- Parts counting
- Percentage weighing
- Checkweighing
- Check counting
- Display hold

| Model          | Capacity | Readability | Pan Size  |
|----------------|----------|-------------|-----------|
| <b>AGB 8</b>   | 8kg      | 0.1g        | 300x400mm |
| <b>AGB 16</b>  | 16kg     | 0.2g        | 300x400mm |
| <b>AGB 35</b>  | 35kg     | 0.5g        | 300x400mm |
| <b>AGB 70</b>  | 70kg     | 1g          | 300x400mm |
| <b>AGF 150</b> | 150kg    | 5g          | 400x500mm |
| <b>AGF 300</b> | 300kg    | 10g         | 400x500mm |
| <b>AGF 600</b> | 600kg    | 20g         | 600x800mm |

## Approved Models

| Model           | Capacity | Readability | Pan Size  |
|-----------------|----------|-------------|-----------|
| <b>AGB 6M</b>   | 6kg      | 2g          | 300x400mm |
| <b>AGB 15M</b>  | 15kg     | 5g          | 300x400mm |
| <b>AGB 30M</b>  | 30kg     | 10g         | 300x400mm |
| <b>AGB 60M</b>  | 60kg     | 20g         | 300x400mm |
| <b>AGF 60M</b>  | 60kg     | 20g         | 400x500mm |
| <b>AGF 150M</b> | 150kg    | 50g         | 400x500mm |
| <b>AGF 300M</b> | 300kg    | 0.1kg       | 400x500mm |



## ACCESSORIES

| Item number | Description  |
|-------------|--|
| 3134012936  | RS-232 cable<br>(to 9 pin connector 1.5m factory fitted) |
| 1120011156  | ATP thermal printer                                      |
| 3074010507  | RS-232 to USB adapter                                    |
| 1100011297  | Relay box  |
| 600002028   | AdamDU Data Collection Program                           |
| 700660290   | Calibration certificate                                  |
| 700660288   | Calibration certificate (600kg model only)               |



## FEATURES

- Built in printer to print labels with weight, average piece weight, product description, date, time, and QR codes
- Vivid, backlit LCD easily visible in any lighting conditions
- Colour-coded keys facilitate quick recognition of the most frequently used buttons
- Level indicator and adjustable feet ensure proper balance setup for optimum weighing results
- Large, grade 304 stainless steel pan allows easy cleaning
- RS-232 interface is available to provide speedy connection to computers and printers
- Rugged construction stands up to industrial use
- Sealed keypad protects against dirt and spills
- Overload protection helps prevent damage to internal components
- Checkweighing with audible alarm and hold function
- Memory accumulation totals results
- Customise label information with software provided to include QR codes, date, time net, gross, tare weights etc...
- Selectable digital filtering helps minimise effects of vibration and disturbances
- Zero-tracking feature ensures display returns to zero reading
- Rechargeable battery included for operation almost anywhere
- Programmable auto power-off to save energy
- Fixed label size

**Quickly produce custom labels and bar codes with the built-in printer**

## GENERAL SPECIFICATIONS

- Weighing units: g, kg, ct, lb, oz, dr, mm, T, tonne
- Interface: RS-232
- Power Supply: 12VDC 50/60Hz 3A adapter / Internal rechargeable battery
- Display: Backlit LCD with 34mm-high digits
- Operating Temperature: 0° to 40°C
- Calibration: External calibration
- Label size 50mm width by 30mm height, with 800 labels per roll

## APPLICATIONS

- Weighing
- Parts counting
- Percentage weighing
- Checkweighing
- Dynamic / animal weighing
- Accumulation of weight
- Display hold
- Peak hold
- Barcode / label printing

| Model          | Capacity | Readability | Pan Size  |
|----------------|----------|-------------|-----------|
| <b>BKT 8</b>   | 8kg      | 0.1g        | 300x400mm |
| <b>BKT 16</b>  | 16kg     | 0.5g        | 300x400mm |
| <b>BKT 32</b>  | 32kg     | 1g          | 300x400mm |
| <b>BKT 60</b>  | 60kg     | 2g          | 300x400mm |
| <b>BKT 120</b> | 120kg    | 5g          | 300x400mm |
| <b>BKT 75</b>  | 75kg     | 5g          | 400x500mm |
| <b>BKT 150</b> | 150kg    | 10g         | 400x500mm |
| <b>BKT 300</b> | 300kg    | 20g         | 400x500mm |
| <b>BKT 600</b> | 600kg    | 50g         | 600x800mm |



## ACCESSORIES

| Item number | Description                       |
|-------------|-----------------------------------|
| 3074010266  | RS-232 cable (null-modem)         |
| 600002028   | AdamDU Data Collection Program    |
| 700660290   | Calibration certificate           |
| 700660288   | Calibration certificate (BKT 600) |



## FEATURES

- Vivid, backlit LCD easily visible in any lighting conditions
- Programmable backlight can be set to “always on,” “always off” or “light only when weighing”
- Capacity tracker built into display for easily monitoring possible overloads
- Checkweighing LEDs clearly show under, over and acceptable limits
- Adjustable levelling feet help optimise setup
- Colour-coded keys facilitate quick recognition of the most frequently used buttons
- Large, grade 304 stainless steel pan allows easy cleaning
- Lightweight design simplifies transport and portability
- Solid ABS housing is durable for industrial use
- Overload protection helps prevent damage to internal components
- Audible overload alarm warns when capacity is exceeded
- External calibration allows for verification and adjustment with weights
- Simple operation allows quick startup and use with little or no training
- Zero-tracking feature ensures display returns to zero reading
- Rechargeable battery included for operation almost anywhere
- Programmable auto power-off to save energy
- AC adapter included
- IP66 rated washdown checkweighing scale

*Checkweighing is a breeze with the WBW's colour indicators*

## GENERAL SPECIFICATIONS

- Capacity: 2kg to 16kg
- Readability: 0.2g to 2g
- Weighing units: g, kg, lb, lb:oz
- Power Supply: 12VDC 50/60Hz 800mA adapter / Internal rechargeable battery
- Display: Backlit LCD with 20mm -high digits
- Calibration: External calibration
- Housing: ABS plastic
- Operating Temperature: -10° to 40°C

## APPLICATIONS

- Weighing
- Checkweighing

| Model         | Capacity | Readability | Pan Size  |
|---------------|----------|-------------|-----------|
| <b>WBW 2</b>  | 2kg      | 0.2g        | 210x173mm |
| <b>WBW 4</b>  | 4kg      | 0.5g        | 210x173mm |
| <b>WBW 8</b>  | 8kg      | 1g          | 210x173mm |
| <b>WBW 16</b> | 16kg     | 2g          | 210x173mm |

## OIML Approved Models

| Model          | Capacity | Readability | Pan Size  |
|----------------|----------|-------------|-----------|
| <b>WBW 3M</b>  | 3000g    | 1g          | 210x173mm |
| <b>WBW 6M</b>  | 6000g    | 2g          | 210x173mm |
| <b>WBW 15M</b> | 15kg     | 5g          | 210x173mm |



## ACCESSORIES

| Item number | Description  |
|-------------|--|
| 2020010755  | Rear Display (factory fitted)                      |
| 303200002   | In-use cover (pack of 10)                          |
| 303200003   | In-use cover (pack of 20)                          |
| 303209190   | In-use cover                                       |
| 303147959   | Vegetable scoop (complete w/ fitting to scale)     |
| 303147960   | Confectionary scoop (complete w/ fitting to scale) |
| 700660290   | Calibration certificate                            |

# GLADIATOR WASHDOWN SCALES



## FEATURES

- Backlit display changes colour for quick notification of checkweighing limits
- Large, grade 304 stainless steel pan allows easy cleaning
- Rugged stainless steel housing for ultimate durability
- Heavy-duty rubber feet ensure stability of unit
- Sealed keypad protects against dirt and spills
- Colour-coded keys facilitate quick recognition of the most frequently used buttons
- RS-232 interface is available to provide speedy connection to computers and printers
- External calibration allows for verification and adjustment with weights
- Hold function freezes the displayed weight, allowing time to elapse without losing the result
- Parts counting with preset sample sizes
- Selectable digital filtering for animal/dynamic weighing enables consistent results for moving subjects
- EC type approved
- IP67-rated for protection against water and dust
- Rechargeable battery included for operation almost anywhere
- Programmable auto power-off to save energy

## GENERAL SPECIFICATIONS

- Weighing units: g, kg, lb, lb:oz, oz, N, custom unit
- Interface: RS-232
- Power Supply: Internal rechargeable battery / Mains power cord
- Display: Backlit LCD with 40mm -high digits
- Calibration: External calibration
- Housing: Stainless steel
- Operating Temperature: 0° to 40°C

## APPLICATIONS

- Weighing
- Parts counting
- Percentage weighing
- Checkweighing
- Check counting
- Display hold

| Model          | Capacity | Readability | Pan Size  |
|----------------|----------|-------------|-----------|
| <b>GGS 8</b>   | 8kg      | 0.2g        | 250x250mm |
| <b>GGS 16</b>  | 16kg     | 0.5g        | 250x250mm |
| <b>GGS 35</b>  | 35kg     | 1g          | 250x250mm |
| <b>GGB 35</b>  | 35kg     | 1g          | 300x400mm |
| <b>GGB 75</b>  | 75kg     | 2g          | 300x400mm |
| <b>GGF 75</b>  | 75kg     | 2g          | 400x500mm |
| <b>GGF 150</b> | 150kg    | 5g          | 400x500mm |
| <b>GGL 150</b> | 150kg    | 5g          | 450x600mm |
| <b>GGL 300</b> | 300kg    | 10g         | 450x600mm |

## Approved Models

| Model           | Capacity | Readability | Pan Size  |
|-----------------|----------|-------------|-----------|
| <b>GGS 6M</b>   | 6kg      | 2g          | 250x250mm |
| <b>GGS 15M</b>  | 15kg     | 5g          | 250x250mm |
| <b>GGS 30M</b>  | 30kg     | 10g         | 250x250mm |
| <b>GGB 30M</b>  | 30kg     | 10g         | 300x400mm |
| <b>GGB 60M</b>  | 60kg     | 20g         | 300x400mm |
| <b>GGF 60M</b>  | 60kg     | 20g         | 400x500mm |
| <b>GGF 150M</b> | 150kg    | 50g         | 400x500mm |
| <b>GGL 150M</b> | 150kg    | 50g         | 450x600mm |
| <b>GGL 300M</b> | 300kg    | 0.1kg       | 450x600mm |



## ACCESSORIES

| Item number | Description  |
|-------------|--|
| 3134012936  | RS-232 cable<br>(to 9 pin connector 1.5m factory fitted) |
| 1120011156  | ATP thermal printer                                      |
| 3074010507  | RS-232 to USB adapter                                    |
| 1100011297  | Relay box  |
| 600002028   | AdamDU Data Collection Program                           |
| 700660290   | Calibration certificate                                  |
| 1120014641  | AIP impact printer                                       |

# SWIFT PRICE COMPUTING RETAIL SCALES



## FEATURES

- Backlit LCD shows weight, unit price and total price, to provide the key information simultaneously
- Rear display mounted on a pillar or back of the scale lets customers see key data
- Adjustable levelling feet help optimise setup
- Colour-coded keys facilitate quick recognition of the most frequently used buttons
- RS-232 interface is available to provide speedy connection to computers and printers
- Optional USB interface simplifies data communication
- Overload protection helps prevent damage to internal components
- Drip channels help divert spills away from the scales internal components
- Auto-clear function
- Product look up (PLU) memory locations store a range of items for recall
- Preset tare function speeds the process of repetitive weighing
- Zero-tracking feature ensures display returns to zero reading
- Available in multiple currencies
- The auto power-off feature conserves battery life
- EC type approved
- Rechargeable battery included for operation almost anywhere

## Simple and stylish for fast price computing in a retail setting

### GENERAL SPECIFICATIONS

- Weighing units: g, kg
- Interface: RS-232, Optional USB
- Power Supply: 12VDC 50/60Hz 800mA adapter
- Display: Backlit LCD with 15mm -high digits
- Calibration: External calibration
- Housing: ABS plastic
- Operating Temperature: -10° to 40°C
- EC approved models approved with NMI (Holland) and NMO (UK)

### APPLICATIONS

- Weighing
- Price computing

## OIML Approved Models EC Type Approved

| Model           | Capacity    | Readability | Pan Size  |
|-----------------|-------------|-------------|-----------|
| <b>SWZ 3D</b>   | 1.5Kg / 3kg | 0.5g / 1g   | 210x300mm |
| <b>SWZ 6D</b>   | 3kg / 6kg   | 1g / 2g     | 210x300mm |
| <b>SWZ 15D</b>  | 6kg / 15kg  | 2g / 5g     | 210x300mm |
| <b>SWZ 30D</b>  | 15kg / 30kg | 5g / 10g    | 210x300mm |
| <b>SWZ 3DP</b>  | 1.5Kg / 3kg | 0.5g / 1g   | 210x300mm |
| <b>SWZ 6DP</b>  | 3kg / 6kg   | 1g / 2g     | 210x300mm |
| <b>SWZ 15DP</b> | 6kg / 15kg  | 2g / 5g     | 210x300mm |
| <b>SWZ 30DP</b> | 15kg / 30kg | 5g / 10g    | 210x300mm |



### ACCESSORIES

| Item number | Description  |
|-------------|--|
| 3074010267  | USB cable  |
| 302013912   | Hard carrying case with lock                         |
| 3022013911  | In-use cover   |
| 1120011156  | ATP thermal printer                                  |
| 3014011014  | RS-232 cable M-F                                     |
| 303149759   | Vegetable Scoop (complete with fitting to scale)     |
| 303149760   | Confectionery Scoop (complete with fitting to scale) |
| 600002028   | AdamDU Data Collection Program                       |
| 700660290   | Calibration certificate                              |
| 1120014641  | AIP impact printer                                   |
| 2020013915  | USB option (type B)                                  |



## FEATURES

- Backlit LCD shows weight, unit weight and count in one convenient location
- Colour-coded keys facilitate quick recognition of the most frequently used buttons
- Level indicator and adjustable feet ensure proper balance setup for optimum weighing results
- Large, grade 304 stainless steel pan allows easy cleaning
- Lightweight design simplifies transport and portability
- Solid ABS housing is durable for industrial use
- Audible overload alarm warns when capacity is exceeded
- External calibration allows for verification and adjustment with weights
- Parts counting with freely selectable sample sizes
- Zero-tracking feature ensures display returns to zero reading
- Programmable auto power-off to save energy
- Rechargeable battery included for operation almost anywhere

***For basic counting applications, the LBC outperforms other scales in its class***

## GENERAL SPECIFICATIONS

- Capacity: 3kg to 30kg
- Readability: 0.1g to 1g
- Weighing units: kg
- Interface: N/A
- Power Supply: 12VDC 50/60Hz 800mA adapter
- Display: Backlit LCD with 18mm-high digits
- Calibration: External calibration
- Housing: ABS plastic
- Operating Temperature: 0° to 40°C

| Model         | Capacity | Readability | Pan Size  |
|---------------|----------|-------------|-----------|
| <b>LBC 3</b>  | 3kg      | 0.1g        | 250x180mm |
| <b>LBC 6</b>  | 6kg      | 0.2g        | 250x180mm |
| <b>LBC 15</b> | 15kg     | 0.5g        | 250x180mm |
| <b>LBC 30</b> | 30kg     | 1g          | 250x180mm |

## APPLICATIONS

- Weighing
- Parts counting

*\*These products are shipped directly from China*

## ACCESSORIES

| Item number | Description               |
|-------------|---------------------------|
| 700200056   | In-use cover              |
| 700200063   | In-use cover (pack of 5)  |
| 700200064   | In-use cover (pack of 10) |



## FEATURES

- Backlit LCD shows weight, unit weight and count in one convenient location
- Colour-coded keys facilitate quick recognition of the most frequently used buttons
- RS-232 interface is available to provide speedy connection to computers and printers
- Optional USB interface simplifies data communication
- Solid ABS housing is durable for industrial use
- Adjustable levelling feet help optimise setup
- Built-in memory for storing products and settings via PLU key
- External calibration allows for verification and adjustment with weights
- Internal counting resolution 1:600,000 for precise results
- Parts counting optimisation automatically refines piece weight as parts are added
- Parts counting with freely selectable sample sizes
- Preset tare function speeds the process of repetitive weighing
- Programmable for counting to a preset number of parts
- AC adapter included
- Programmable auto power-off to save energy
- Rechargeable battery included for operation almost anywhere

***With easy operation and a durable design, the CCT provides a powerful solution for industrial needs.***

## GENERAL SPECIFICATIONS

- Weighing units: g, kg, lb
- Interface: RS-232, Optional USB
- Power Supply: 12VDC 50/60Hz 800mA adapter / Internal rechargeable battery
- Display: Backlit LCD with 15mm -high digits
- Housing: ABS plastic
- Operating Temperature: -10° to 40°C
- Calibration: External calibration
- EC approved models approved with NMI (Holland) and NMO (UK)

## APPLICATIONS

- Weighing
- Parts counting
- Check counting

| Model           | Capacity | Readability | Pan Size  |
|-----------------|----------|-------------|-----------|
| <b>CCT 4</b>    | 4kg      | 0.1g        | 210x300mm |
| <b>CCT 8</b>    | 8kg      | 0.2g        | 210x300mm |
| <b>CCT 16</b>   | 16kg     | 0.5g        | 210x300mm |
| <b>CCT 32</b>   | 32kg     | 1g          | 210x300mm |
| <b>CCT 48</b>   | 48kg     | 2g          | 210x300mm |
| <b>CCT 8UH</b>  | 8kg      | 0.05g       | 210x300mm |
| <b>CCT 16UH</b> | 16kg     | 0.1g        | 210x300mm |
| <b>CCT 32UH</b> | 32kg     | 0.2g        | 210x300mm |
| <b>CCT 48UH</b> | 48kg     | 0.5g        | 210x300mm |



## ACCESSORIES

| Item number | Description                    |
|-------------|--------------------------------|
| 3074010267  | USB cable                      |
| 302013912   | Hard carrying case with lock   |
| 2020013913  | In-use cover (pack of 5)       |
| 2020013914  | In-use cover (pack of 10)      |
| 3022013911  | In-use cover                   |
| 1120011156  | ATP thermal printer            |
| 3014011014  | RS-232 cable M-F               |
| 600002028   | AdamDU Data Collection Program |
| 700660290   | Calibration certificate        |
| 1120014641  | AIP impact printer             |
| 2020013915  | USB option                     |



## FEATURES

- Backlit LCD shows weight, unit weight and count in one convenient location
- Programmable backlight can be set to “always on,” “always off” or “light only when weighing”
- Color-coded keys facilitate quick recognition of the most frequently used buttons
- Level indicator and adjustable feet ensure proper balance setup for optimum weighing results
- Large, grade 304 stainless steel pan allows swift cleaning
- RS-232 interface is available to provide speedy connection to computers and printers
- Optional USB interface simplifies data communication
- Overload protection helps prevent damage to internal components
- Rugged construction stands up to industrial use
- Supports connection to platforms with up to four load cells
- External calibration allows for verification and adjustment with weights
- Memory accumulation totals results
- Parts counting with freely selectable sample sizes
- Parts counting optimization automatically refines piece weight as parts are added
- Preset tare function speeds the process of repetitive weighing
- Product look up (PLU) memory locations store a range of items for recall
- Programmable for counting to a preset number of parts
- Quick and easy configuration using the keypad
- Security password control prevents unauthorized access
- Zero-tracking feature ensures display returns to zero reading
- User can program alarm to sound when preset total is reached
- Rechargeable battery included for operation almost anywhere
- Programmable auto power-off to save energy

## Expedite complex, high-volume counting tasks

### GENERAL SPECIFICATIONS

- Capacity: 4kg to 48kg
- Readability: 0.1g to 2g
- Weighing units: kg
- Interface: RS-232, Second scale port, Optional USB
- Power Supply: Power cord / Internal rechargeable battery
- Display: Backlit LCD with 20mm -high digits
- Calibration: External calibration
- Housing: ABS plastic
- Operating Temperature: 0° to 40°C

| Model         | Capacity | Readability | Pan Size  |
|---------------|----------|-------------|-----------|
| <b>CBD 4</b>  | 4kg      | 0.1g        | 225x275mm |
| <b>CBD 8</b>  | 8kg      | 0.2g        | 225x275mm |
| <b>CBD 16</b> | 16kg     | 0.5g        | 225x275mm |
| <b>CBD 32</b> | 32kg     | 1g          | 225x275mm |
| <b>CBD 48</b> | 48kg     | 2g          | 225x275mm |



### APPLICATIONS

- Weighing
- Parts counting
- Check counting
- Accumulation
- Dual scale operation

### ACCESSORIES

| Item number | Description                    |
|-------------|--------------------------------|
| 302000001   | Hard carrying case with lock   |
| 302205006   | In-use wet cover               |
| 700200057   | In-use wet cover (pack of 5)   |
| 700200058   | In-use wet cover (pack of 10)  |
| 3074010266  | RS-232 cable (null-modem)      |
| 3074010507  | RS-232 to USB adapter          |
| 1120014641  | AIP impact printer             |
| 1120011156  | ATP thermal printer            |
| 600002028   | AdamDU Data Collection Program |
| 700660290   | Calibration certificate        |



# GBC AND GFC BENCH COUNTING SCALES



## FEATURES

- Backlit LCD shows weight, unit weight and count in one convenient location
- Programmable backlight can be set to "always on," "always off" or "light only when weighing"
- Adjustable levelling feet help optimise setup
- Colour-coded keys facilitate quick recognition of the most frequently used buttons
- RS-232 interface for connection to computers and printers
- Rugged construction stands up to industrial use
- Splash-proof housing, keypad and display mean easy cleaning and peace of mind
- Audible overload alarm warns when capacity has been exceeded
- External calibration allows for verification and adjustment with weights
- Internal counting resolution 1:600,000 for precise results
- Parts counting with freely selectable sample sizes
- Parts counting optimisation automatically refines piece weight as parts are added
- Preset tare function speeds the process of repetitive weighing
- Printouts include date and time for data tracking within Good Laboratory Practices (GLP) guidelines
- Zero-tracking feature ensures display returns to zero reading
- User can program alarm to sound when preset total is reached
- Rechargeable battery included for operation almost anywhere
- Programmable auto power-off to save energy

## Exceptional durability for industrial counting needs

### GENERAL SPECIFICATIONS

- Weighing units: kg
- Interface: RS-232, Optional USB
- Power Supply: Mains power cord / Internal rechargeable battery
- Display: Backlit LCD with 20mm-high digits
- Calibration: External calibration
- Housing: Die-cast aluminum / stainless steel top pan
- Operating Temperature: -10° to 40°C

| Model         | Capacity | Readability | Pan Size  |
|---------------|----------|-------------|-----------|
| <b>GBC 16</b> | 16kg     | 0.5g        | 300x400mm |
| <b>GBC 32</b> | 32kg     | 1g          | 300x400mm |
| <b>GBC 60</b> | 60kg     | 2g          | 300x400mm |

| Model          | Capacity | Readability | Pan Size  |
|----------------|----------|-------------|-----------|
| <b>GFC 75</b>  | 75kg     | 5g          | 400x500mm |
| <b>GFC 150</b> | 150kg    | 10g         | 400x500mm |
| <b>GFC 300</b> | 300kg    | 20g         | 400x500mm |

### APPLICATIONS

- Weighing
- Parts counting
- Check counting



### ACCESSORIES

| Item number | Description                    |
|-------------|--------------------------------|
| 3052010526  | In-use cover                   |
| 1120011156  | ATP thermal printer            |
| 3074010266  | RS-232 cable (null-modem)      |
| 3074010507  | RS-232 to USB adapter          |
| 600002028   | AdamDU Data Collection Program |
| 700660290   | Calibration certificate        |
| 1120014641  | AIP impact printer             |



1120011156



600002028



## FEATURES

- Built in printer to print labels with weight, average piece weight, count, product description, date, time, and QR codes
- Vivid, backlit LCD easily visible in any lighting conditions
- Programmable backlight can be set to “always on,” “always off” or “light only when weighing”
- Adjustable levelling feet help optimise setup
- Colour-coded keys facilitate quick recognition of the most frequently used buttons
- Large, grade 304 stainless steel pan allows easy cleaning
- RS-232 interface is available to provide speedy connection to computers and printers
- Rugged construction stands up to industrial use
- Sealed keypad protects against dirt and spills
- Parts counting with freely selectable sample sizes
- Parts counting optimisation automatically refines piece weight as parts are added, and 1006 PLU memories
- Zero-tracking feature ensures display returns to zero reading
- Selectable digital filtering helps minimise effects of vibration and disturbances
- Rechargeable battery included for operation almost anywhere
- Programmable auto power-off to save energy
- Fixed label size

## Built-in printer facilitates heavy-duty industrial counting tasks

### GENERAL SPECIFICATIONS

- Weighing units: g, kg, lb, oz
- Interface: RS-232
- Power Supply: 12VDC 50/60Hz 3A adapter / Internal rechargeable battery
- Display: Backlit LCD with 34mm-high digits
- Operating Temperature: 0° to 40°C
- Calibration: External calibration
- Label size 50mm width by 30mm height, with 800 labels per roll

| Model          | Capacity | Readability | Pan Size  |
|----------------|----------|-------------|-----------|
| <b>BCT 16</b>  | 16kg     | 0.5g        | 300x400mm |
| <b>BCT 32</b>  | 32kg     | 1g          | 300x400mm |
| <b>BCT 60</b>  | 60kg     | 2g          | 300x400mm |
| <b>BCT 75</b>  | 75kg     | 5g          | 400x500mm |
| <b>BCT 150</b> | 150kg    | 0.01kg      | 400x500mm |
| <b>BCT 300</b> | 300kg    | 0.02kg      | 400x500mm |
| <b>BCT 600</b> | 600kg    | 50g         | 800x600mm |

### APPLICATIONS

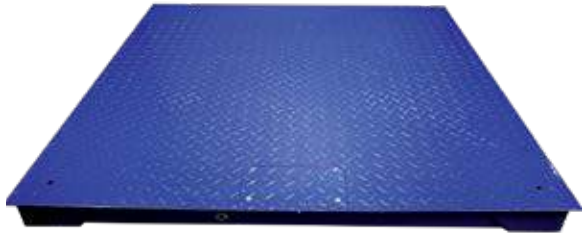
- Weighing
- Parts counting
- Check counting
- Averaging
- Barcode / label printing



### ACCESSORIES

| Item number | Description                       | Price  |
|-------------|-----------------------------------|--------|
| 3074010266* | RS-232 cable (null-modem)         | €26,00 |
| 600002028   | AdamDU Data Collection Program    | €75,00 |
| 700660290   | Calibration certificate           | €55,00 |
| 700660288   | Calibration certificate (BKT 600) | €90,00 |

\*Additional labor charge is applicable



## FEATURES

- Rugged construction stands up to industrial use
- Chequered plate surface for added grip
- Approximately three meter shielded cable
- Optional ramps facilitate loading and unloading
- Can be used with one of several Adam indicators

*Quality construction with diamond-plate surface for ultimate durability and performance*

## GENERAL SPECIFICATIONS

- Housing: Mild steel base
- Operating Temperature: -10° to 40°C

## APPLICATIONS

- Weighing
- Parts counting
- Checkweighing
- Dynamic / animal weighing



GK Indicator  
Page 39

| Model  | Capacity | Readability | Pan Size    |
|--------|----------|-------------|-------------|
| PT 110 | 1000kg   | 0.2kg       | 1000x1000mm |
| PT 310 | 3000kg   | 0.5kg       | 1000x1000mm |
| PT 112 | 1000kg   | 0.2kg       | 1200x1200mm |
| PT 115 | 1000kg   | 0.2kg       | 1500x1500mm |
| PT 312 | 3000kg   | 0.5kg       | 1200x1200mm |
| PT 315 | 3000kg   | 0.5kg       | 1500x1500mm |

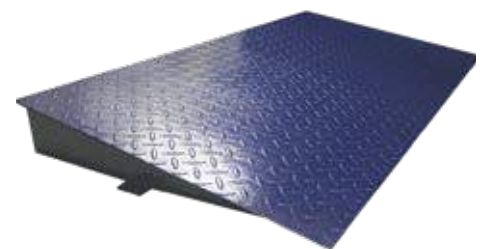
## Models with GK indicator

| Model       | Capacity | Readability | Pan Size    |
|-------------|----------|-------------|-------------|
| PT 110 [GK] | 1000kg   | 0.2kg       | 1000x1000mm |
| PT 112 [GK] | 1000kg   | 0.2kg       | 1200x1200mm |
| PT 115 [GK] | 1000kg   | 0.2kg       | 1500x1500mm |
| PT 310 [GK] | 3000kg   | 0.5kg       | 1000x1000mm |
| PT 312 [GK] | 3000kg   | 0.5kg       | 1200x1200mm |
| PT 315 [GK] | 3000kg   | 0.5kg       | 1500x1500mm |



## ACCESSORIES

| Item number  | Description                          |
|--------------|--------------------------------------|
| Verification | Verification Fees for Trade Approved |
| 3102311619   | In-use cover                         |
| 3052010526   | In-use cover                         |
| 1120011156   | ATP thermal printer                  |
| 3074010266   | RS-232 cable (null-modem)            |
| 3074010507   | RS-232 to USB adapter                |
| 700100200    | Mild Steel Ramp - PT 12R 1200mm wide |
| 700100201    | Mild Steel Ramp - PT 15R 1500mm wide |
| 700100199    | Mild Steel Ramp - PT 10R 1000mm wide |
| 700660289    | Calibration certificate              |
| 1120014641   | AIP impact printer                   |
| 2050013351   | Indicator stand                      |



700100200



## FEATURES

- Adjustable levelling feet help optimise setup
- Built-in ramps on each side enable easy access
- Chequered plate surface for added grip
- Heavy-duty rubber feet ensure stability of unit
- Integrated wheels permit easy movement
- Three-meter load cell cable
- Rugged construction stands up to industrial use
- PTM500 is base only
- PTM500(GK) is base and indicators

*Low-profile base and easy-access ramps for warehouses or medical use*

## GENERAL SPECIFICATIONS

- Housing: Mild steel base
- Operating Temperature: -10° to 40°C

| Model               | Capacity | Readability | Pan Size  |
|---------------------|----------|-------------|-----------|
| <b>PTM 500</b>      | 500kg    | 0.1kg       | 760x580mm |
| <b>PTM 500 [GK]</b> | 500kg    | 0.1kg       | 760x580mm |



## APPLICATIONS

- Weighing
- Parts counting
- Percentage weighing
- Checkweighing
- Dynamic / animal weighing



GK Indicator  
Page 39

## ACCESSORIES

| Item number | Description                    |
|-------------|--------------------------------|
| 3014011014  | RS-232 cable                   |
| 3052010526  | In-use cover                   |
| 1120011156  | ATP thermal printer            |
| 1120014641  | AIP impact printer             |
| 3074010266  | RS-232 cable (null-modem)      |
| 3074010507  | RS-232 to USB adapter          |
| 600002028   | AdamDU Data Collection Program |
| 700660289   | Calibration certificate        |
| 2050013351  | Indicator stand                |



## FEATURES

- Low-profile beams allow easy pallet weighing using pallet trucks
- Approximately five meter of shielded cable
- Heavy-duty rubber feet ensure stability of unit
- Integrated wheels permit easy movement
- Can be used with one of several Adam indicators
- Two beams per set
- AELP1000, AELP2000, AELP3000 are beams only

*Low-profile beams facilitate safe, secure weighing for loaded pallets*

## GENERAL SPECIFICATIONS

- Housing: Mild steel base
- Operating Temperature: -10° to 40°C

| Model            | Capacity | Readability | Pan Size   |
|------------------|----------|-------------|------------|
| <b>AELP 1000</b> | 1000kg   | 0.2kg       | 120x1330mm |
| <b>AELP 2000</b> | 2000kg   | 0.5kg       | 120x1330mm |

## APPLICATIONS

- Weighing
- Parts counting
- Percentage weighing
- Checkweighing
- Check counting
- Dynamic / animal weighing



GK Indicator  
Page 39

## Models with GK indicator

| Model                 | Capacity | Readability | Pan Size   |
|-----------------------|----------|-------------|------------|
| <b>AELP 1000 [GK]</b> | 1000kg   | 0.2kg       | 120x1330mm |
| <b>AELP 2000 [GK]</b> | 2000kg   | 0.5kg       | 120x1330mm |

## ACCESSORIES

| Item number | Description                    |
|-------------|--------------------------------|
| 3052010526  | In-use cover                   |
| 1120011156  | ATP thermal printer            |
| 1120014641  | AIP impact printer             |
| 3074010266  | RS-232 cable (null-modem)      |
| 3074010507  | RS-232 to USB adapter          |
| 600002028   | AdamDU Data Collection Program |
| 700660289   | Calibration certificate        |
| 2050013351  | Indicator stand                |

# PTS PLUS AND PTT PALLET TRUCK SCALES



## FEATURES

- Vivid, backlit LCD easily visible in any lighting conditions
- Programmable backlight can be set to “always on,” “always off” or “light only when weighing”
- Capacity tracker built into display for easily monitoring possible overloads
- Checkweighing LEDs light to clearly show under, over and acceptable limits
- Solid non-marring polyurethane wheels
- Colour-coded keys facilitate quick recognition of the most frequently used buttons
- RS-232 interface for connection to computers and printers
- IP67-Rated indicator (AE403) for protection against water and dust
- Wheels swivel, allowing easy movement
- Audible overload alarm warns when capacity has been exceeded
- Checkweighing with audible alarm
- External calibration allows for verification and adjustment with weights
- Parts counting with preset sample sizes
- Selectable digital filtering for animal/dynamic weighing delivers stable results for moving subjects
- Zero-tracking feature ensures display returns to zero reading
- Rechargeable battery included for operation almost anywhere
- Programmable auto power-off to save energy

**Speed up warehouse operations and reduce transportation overcharges with the PTS Plus and PTT**

## GENERAL SPECIFICATIONS

- Weighing units: kg, lb, lb:oz, oz, N
- Interface: RS-232
- Power Supply: Mains Power Cable  
Internal rechargeable battery
- Display: Backlit LCD with 40mm-high digits
- Calibration: External calibration
- Housing: Mild steel base/ 304 Stainless Steel
- Operating Temperature: -10° to 40°C

| Model                | Capacity | Readability | Pan Size   |
|----------------------|----------|-------------|------------|
| <b>PTS Plus 2000</b> | 2000kg   | 0.5kg       | 160x1150mm |
| <b>PTT 2000</b>      | 2000kg   | 0.5kg       | 160x1150mm |



## APPLICATIONS

- Weighing
- Parts counting
- Percentage weighing
- Checkweighing
- Dynamic / animal weighing

PTS Plus 2000 model is with AE403 indicator.  
PTT 2000 model is with AE503 indicator.  
PTT 2000 model allows labels to be printed when pallets are weighed.

## ACCESSORIES

| Item number | Description             |
|-------------|-------------------------|
| 700660289   | Calibration certificate |



## FEATURES

- Vivid, backlit LCD easily visible in any lighting conditions
- Programmable backlight can be set to “always on,” “always off” or “light only when weighing”
- Capacity tracker built into display for easily monitoring possible overloads
- Colour-coded keys facilitate quick recognition of the most frequently used buttons
- RS-232 interface for connection to computers and printers
- Solid ABS housing is durable for industrial uses
- Splash-proof housing, keypad and display mean easy cleaning and peace of mind
- Wall-mount bracket for placing indicator on vertical surface
- Checkweighing with audible alarm
- External calibration allows for verification and adjustment with weights
- Parts counting with freely selectable sample sizes
- Parts counting optimisation automatically refines piece weight as parts are added
- Preset tare function speeds the process of repetitive weighing
- Printouts include date and time for data tracking within Good Laboratory Practices (GLP) guidelines
- Programmable capacity and readability for a variety of applications
- Quick and easy configuration using the keypad
- Selectable digital filtering for animal/dynamic weighing delivers stable results for moving subjects
- Zero-tracking feature ensures display returns to zero reading
- Rechargeable battery included for operation almost anywhere
- Programmable auto power-off to save energy

## Weighing and counting tasks accomplished with simple versatility

### GENERAL SPECIFICATIONS

- Weighing units: g, kg
- Interface: RS-232
- Power Supply: Mains power cord / Internal rechargeable battery
- Display: Backlit LCD with capacity tracker with 20mm-high digits
- Calibration: External calibration
- Housing: ABS plastic
- Operating Temperature: -10° to 40°C

| Model | Capacity Range | Resolution |
|-------|----------------|------------|
| GK    | Selectable     | 1:80,000   |



### APPLICATIONS

- Weighing
- Parts counting
- Percentage weighing
- Checkweighing
- Check counting
- Dynamic / animal weighing

### ACCESSORIES

| Item number | Description                    |
|-------------|--------------------------------|
| 3052010526  | In-use cover                   |
| 1120011156  | ATP thermal printer            |
| 1120014641  | AIP impact printer             |
| 3074010266  | RS-232 cable (null-modem)      |
| 3074010507  | RS-232 to USB adapter          |
| 600002028   | AdamDU Data Collection Program |
| 3051410045  | Wall Bracket                   |
| 2050013351  | Indicator stand                |



1120014641

# AE 403 SERIES INDICATOR



## FEATURES

- Backlit display changes color for quick notification of checkweighing limits
- Capacity tracker built into display for easily monitoring possible overloads
- Color-coded keys facilitate quick recognition of the most frequently used buttons
- Rugged 304 stainless steel construction for ultimate durability
- RS-232 interface is available to provide speedy connection to computers and printers
- Wall-mount bracket for placing indicator on vertical surface
- External calibration allows for verification and adjustment with weights
- Checkweighing with audible alarm
- Hold function freezes the displayed weight, allowing time to elapse without losing the result
- Parts counting with preset sample sizes
- Selectable digital filtering helps minimize effects of vibration and disturbances
- User-selectable scale division
- Zero-tracking feature ensures display returns to zero reading
- IP67-rated for protection against water and dust
- Rechargeable battery included for operation almost anywhere
- Programmable auto power-off to save energy

## Multi-function washdown indicator for demanding environments

### GENERAL SPECIFICATIONS

- Weighing units: g, kg, lb, lb:oz, oz, N, custom unit
- Interface: RS-232
- Power Supply: Mains power cable / Internal rechargeable battery
- Display: Backlit LCD with 40mm -high digits
- Calibration: External calibration
- Housing: Stainless steel 304
- Operating Temperature: 0° to 40°C

### APPLICATIONS

- Weighing
- Parts counting
- Percentage weighing
- Checkweighing
- Dynamic / animal weighing

| Model         | Capacity Range | Resolution |
|---------------|----------------|------------|
| <b>AE 403</b> | Selectable     | 1:80,000   |

## Approved Models

| Model          | Capacity Range | Resolution |
|----------------|----------------|------------|
| <b>AE 403M</b> | Selectable     | 1:6,000    |



### ACCESSORIES

| Item number | Description  |
|-------------|--|
| 3134012936  | RS-232 cable<br>(to 9 pin connector 1.5m factory fitted) |
| 3074010507  | RS-232 to USB adapter                                    |
| 1120014641  | AIP impact printer                                       |
| 1120011156  | ATP thermal printer                                      |
| 1100011297  | Relay box  |
| 600002028   | AdamDU Data Collection Program                           |
| 2050013351  | Indicator stand  |



1120014641



3134012936



# AE 503 SERIES INDICATOR



## FEATURES

- Built in printer to print weight, date, time, description etc...
- Vivid, backlit LCD easily visible in any lighting conditions
- Programmable backlight can be set to “always on,” “always off” or “light only when weighing”
- Color-coded keys facilitate quick recognition of the most frequently used buttons
- RS-232 interface is available to provide speedy connection to computers and printers
- Rugged construction stands up to industrial use
- Zero-tracking feature ensures display returns to zero reading
- Checkweighing with audible alarm and hold function
- External calibration allows for verification and adjustment with weights
- Quick and easy configuration using the keypad
- User-selectable scale division
- Rechargeable battery included for operation almost anywhere
- Programmable auto power-off to save energy
- Customise label information with software provided to include QR codes, date, time, net, gross, tare weights, etc...
- Fixed label size

***Built-in label printer with numerous weighing units and a large backlit display***

## GENERAL SPECIFICATIONS

- Weighing units: g, kg, lb, oz, ct, dr, mm, T, tonne
- Interface: RS-232
- Power Supply: 12VDC 3A adapter / Internal rechargeable battery
- Display: Backlit LCD with 34mm -high digits
- Calibration: External calibration
- Housing: ABS plastic
- Operating Temperature: 0° to 40°C
- Label size 50mm width by 30mm height, with 800 labels per roll

## APPLICATIONS

- Weighing
- Parts counting
- Percentage weighing
- Check counting
- Averaging
- Barcode / label printing

| Model         | Capacity Range | Resolution |
|---------------|----------------|------------|
| <b>AE 503</b> | Selectable     | 1:60,000   |



## ACCESSORIES

| Item number | Description                    |
|-------------|--------------------------------|
| 3074010266  | RS-232 cable (Null modem)      |
| 3074010507  | RS-232 to USB adapter          |
| 600002028   | AdamDU Data Collection Program |

# AE 504 SERIES COUNTING INDICATOR



## FEATURES

- Built in printer to print labels with weight, average piece weight, count, product description, date, time, and QR codes
- Vivid, backlit LCD easily visible in any lighting conditions
- Programmable backlight can be set to “always on,” “always off” or “light only when weighing”
- Color-coded keys facilitate quick recognition of the most frequently used buttons
- RS-232 interface is available to provide speedy connection to computers and printers
- Rugged construction stands up to industrial use
- Zero-tracking feature ensures display returns to zero reading
- Parts counting optimization automatically refines piece weight as parts are added
- Quick and easy configuration using the keypad
- User-selectable scale division
- Rechargeable battery included for operation almost anywhere
- Programmable auto power-off to save energy
- Full keyboard for advanced counting and includes 1006 PLU memories
- Customise label information with software provided
- Fixed label size

*The AE504 display contains a full numerical keypad for speedy entry*

## GENERAL SPECIFICATIONS

- Weighing units: g, kg, lb, oz
- Interface: RS-232
- Power Supply: 12VDC 3A adapter / Internal rechargeable battery
- Display: Backlit LCD with 34mm -high digits
- Calibration: External calibration
- Housing: ABS plastic
- Operating Temperature: 0° to 40°C
- Label size 50mm width by 30mm height, with 800 labels per roll

| Model         | Capacity Range | Resolution |
|---------------|----------------|------------|
| <b>AE 504</b> | Selectable     | 1:60,000   |



## APPLICATIONS

- Weighing
- Parts counting
- Percentage weighing
- Check counting
- Averaging
- Barcode / label printing

## ACCESSORIES

| Item number | Description                    |
|-------------|--------------------------------|
| 3074010266  | RS-232 cable (Null modem)      |
| 3074010507  | RS-232 to USB adapter          |
| 600002028   | AdamDU Data Collection Program |



## FEATURES

- Backlit LCD shows weight, unit weight and count in one convenient location
- Colour-coded keys facilitate quick recognition of the most frequently used buttons
- Lightweight design simplifies transport and portability
- RS-232 interface for connection to computers and printers
- Solid ABS housing is durable for industrial uses
- Wall-mount bracket for placing indicator on vertical surface
- Audible overload alarm warns when capacity has been exceeded
- Internal counting resolution 1:600,000 for precise results
- Parts counting with freely selectable sample sizes
- Parts counting optimisation automatically refines piece weight as parts are added
- Preset tare function speeds the process of repetitive weighing
- Printouts include date and time for data tracking within Good Laboratory Practices (GLP) guidelines
- Selectable digital filtering helps minimise effects of vibration and disturbances
- Zero-tracking feature ensures display returns to zero reading
- User can program alarm to sound when preset total is reached
- Rechargeable battery included for operation almost anywhere
- Programmable auto power-off to save energy

## *Fundamental weighing and counting in a multi-functional indicator*

### GENERAL SPECIFICATIONS

- Weighing units: g, kg
- Interface: RS-232
- Power Supply: Power Cord / Internal rechargeable battery
- Display: Backlit LCD with 20mm-high digits
- Calibration: External calibration
- Housing: ABS plastic
- Operating Temperature: -10° to 40°C

| Model | Capacity Range | Resolution |
|-------|----------------|------------|
| GC    | Selectable     | 1:80,000   |



### APPLICATIONS

- Weighing
- Parts counting
- Check counting

### ACCESSORIES

| Item number | Description                    |
|-------------|--------------------------------|
| 3052010526  | In-use cover                   |
| 1120011156  | ATP thermal printer            |
| 1120014641  | AIP impact printer             |
| 3074010266  | RS-232 cable (null-modem)      |
| 3074010507  | RS-232 to USB adapter          |
| 600002028   | AdamDU Data Collection Program |
| 3051410045  | Wall Bracket                   |
| 2050013351  | Indicator stand                |



1120014641

# MTB BABY AND TODDLER SCALE



## FEATURES

- High-contrast display is easily visible from a distance
- Memory feature can recall the last weight taken, allowing the user to focus on the child
- Cradle can be removed to weigh toddlers on the non-slip rubber mat
- Ergonomic cradle provides comfortable support
- Lightweight design simplifies transport and portability
- Auto power-off to save energy
- External calibration allows for verification and adjustment with weights
- Simple operation allows quick startup and use with little or no training
- Operates with AC adapter (included) or batteries (not included)
- Ruler for measuring length of baby

*Offering the flexibility to weigh newborns and toddlers on the same scale*

## GENERAL SPECIFICATIONS

- Weighing units: kg, lb, lb:oz
- Power Supply: 6VDC 500mA adapter / 4 x AA batteries
- Display: LCD with 29mm-high digits
- Calibration: External calibration
- Housing: ABS plastic
- Operating Temperature: 10° to 40°C

| Model  | Capacity | Readability | Pan Size  |
|--------|----------|-------------|-----------|
| MTB 20 | 20kg     | 5g          | 285x560mm |



## APPLICATIONS

- Weighing

*\* Minimum order quantity 24*

## ACCESSORIES

| Item number | Description             |
|-------------|-------------------------|
| 700660290   | Calibration certificate |



## FEATURES

- BMI (body mass index) function available on the MDW 300L
- The MDW 300L offers RS-232 interface for fast communication with printers and computers
- MDW 250L and 300L feature a hold function to retain the weight on the display
- Use the MDW 250L and 300L with the included AC adapter or rechargeable battery
- Height measurements from 60cm to 212cm
- Anti-slip platform ensures safety stepping on and off the scale
- Integrated wheels permit easy movement (Wheels not available on MDW250L)
- Height rod facilitates measuring the height of children and adults while weighing
- Tare bar included with MDW200M only

**Affordable, easy-to-operate scale measures height and weight**

## GENERAL SPECIFICATIONS

- Weighing units: kg, lb (L models only)
- Display: Graduated beam (M models only)
- Calibration: External calibration
- Operating Temperature: 5° to 40°C
- Power Supply: 15VDC 50/60Hz 500mA adapter / Internal rechargeable battery (L models only)
- Display: LED with 22mm-high digits (L models only)
- Interface: RS-232 (MDW300L only)

| Model            | Capacity | Readability | Pan Size  |
|------------------|----------|-------------|-----------|
| <b>MDW 160M*</b> | 160kg    | 100g        | 375x275mm |
| <b>MDW 200M*</b> | 200kg    | 100g        | 375x275mm |
| <b>MDW 250L*</b> | 250kg    | 100g        | 375x275mm |
| <b>MDW 300L</b>  | 300kg    | 50g         | 375x275mm |



## APPLICATIONS

- Weighing

*\*Shipped directly from China.  
Minimum order quantity of 24*

## ACCESSORIES

| Item number | Description   |
|-------------|---|
| 1120011156  | ATP thermal printer   |
| 1120014641  | AIP impact printer  |
| 3014011014  | RS-232 cable M-F  |
| 3074010507  | RS-232 to USB adapter (must order corresponding RS-232 cable) |
| 700660290   | Calibration certificate                                       |



## FEATURES

- Vivid, backlit LCD easily visible in any lighting conditions
- Automatic height calculation using ultrasonic sensors for precision measurements
- Printout can include a patient and doctor ID, as well as BMI measurements
- Height reading can be switched from centimeters to inches
- Ultrasonic height measurements from 80cm-210cm
- Anti-slip platform ensures safety stepping on and off the scale
- Colour-coded keys facilitate quick recognition of the most frequently used buttons
- Integrated wheels permit easy movement
- RS-232 interface for connection to computers and printers
- BMI (body mass index) indicator
- External calibration allows for verification and adjustment with weights
- AC adapter included
- Rechargeable battery included for operation almost anywhere

*Elegant ultrasonic scale effortlessly calculates height, weight and BMI*

## GENERAL SPECIFICATIONS

- Weighing units: kg, lb, lb:oz
- Interface: RS-232
- Power Supply: 12VDC 50/60Hz 800mA adapter / Internal rechargeable battery
- Display: Backlit LCD with 17mm-high digits
- Calibration: External calibration
- Housing: Mild steel base
- Operating Temperature: 0° to 40°C

| Model           | Capacity | Readability | Pan Size  |
|-----------------|----------|-------------|-----------|
| <b>MUW 300L</b> | 300kg    | 50g         | 375x375mm |



## APPLICATIONS

- Weighing

## ACCESSORIES

| Item number | Description   |
|-------------|---|
| 1120011156  | ATP thermal printer   |
| 1120014641  | AIP impact printer  |
| 3014011014  | RS-232 cable M-F  |
| 3074010507  | RS-232 to USB adapter (must order corresponding RS-232 cable) |
| 700660290   | Calibration certificate                                       |



## FEATURES

- Bright LED display for easy viewing in most environments
- Colour-coded keys facilitate quick recognition of the most frequently used buttons
- Splash-proof housing, keypad and display mean easy cleaning and peace of mind
- Footrests and armrests pivot for easy patient accessibility
- Wheels swivel, allowing easy movement
- BMI (body mass index) indicator
- Zero-tracking feature ensures display returns to zero reading
- Rechargeable battery included for operation almost anywhere
- AC adapter included

*Convenience and accessibility when weighing patients with limited mobility*

## GENERAL SPECIFICATIONS

- Weighing units: kg, lb
- Interface: RS-232
- Power Supply: 15VDC 50/60Hz 500mA adapter / Internal rechargeable battery
- Display: LED with 22mm-high digits
- Calibration: External calibration
- Operating Temperature: 5° to 40°C

| Model    | Capacity | Readability |
|----------|----------|-------------|
| MCW 300L | 300kg    | 50g         |



## APPLICATIONS

- Weighing

*\*This products is shipped directly from China*

## ACCESSORIES

| Item number | Description   |
|-------------|---|
| 1120011156  | ATP thermal printer   |
| 1120014641  | AIP impact printer  |
| 3014011014  | RS-232 cable M-F  |
| 3074010507  | RS-232 to USB adapter (must order corresponding RS-232 cable) |
| 600002028   | AdamDU Data Collection Program                                |
| 700660290   | Calibration certificate                                       |

# OIML WEIGHT SETS



Stainless steel weight sets

Cast Iron Weight

The OIML weights are individual stainless steel masses that can be used to test to the OIML standard. E2 weights offer the highest accuracy ideal for Analytical balances, followed by F1 weights which are suitable for precision balances. M1 weights are ideal for compact and bench scales that require less accuracy. OIML weight sets are a complete set of test weight that can meet the requirements for testing to OIML standards. E2 weights offer the highest accuracy ideal for analytical, F1 weights are geared towards precision balances, M1 weights offer the lowest accuracy but are more affordable and are ideal for lower cost items such as compact balances and bench scales. Cast iron weights are available in OIML M1 class, they offer higher capacities to meet the needs to calibrate larger scales.

## Individual stainless steel weights

| Part Number | Model                      | Class   |
|-------------|----------------------------|---------|
| 700100232   | E2 50g Calibration Weight  | OIML E2 |
| 700100022   | E2 100g Calibration Weight | OIML E2 |
| 700100023   | E2 200g Calibration Weight | OIML E2 |
| 700100019   | F1 1g Calibration Weight   | OIML F1 |
| 700100018   | F1 2g Calibration Weight   | OIML F1 |
| 700100017   | F1 5g Calibration Weight   | OIML F1 |
| 700100016   | F1 10g Calibration Weight  | OIML F1 |
| 700100015   | F1 20g Calibration Weight  | OIML F1 |
| 700100014   | F1 50g Calibration Weight  | OIML F1 |
| 700100007   | F1 100g Calibration Weight | OIML F1 |
| 700100012   | F1 200g Calibration Weight | OIML F1 |
| 700100008   | F1 500g Calibration Weight | OIML F1 |
| 700100009   | F1 1kg Calibration Weight  | OIML F1 |
| 700100010   | F1 2kg Calibration Weight  | OIML F1 |
| 700100013   | F1 5kg Calibration Weight  | OIML F1 |
| 700100065   | M1 1g Calibration Weight   | OIML M1 |
| 700100066   | M1 2g Calibration Weight   | OIML M1 |
| 700100067   | M1 5g Calibration Weight   | OIML M1 |
| 700100068   | M1 10g Calibration Weight  | OIML M1 |
| 700100069   | M1 20g Calibration Weight  | OIML M1 |
| 700100058   | M1 50g Calibration Weight  | OIML M1 |
| 700100059   | M1 100g Calibration Weight | OIML M1 |
| 700100072   | M1 200g Calibration Weight | OIML M1 |
| 700100060   | M1 500g Calibration Weight | OIML M1 |
| 700100029   | M1 1kg Calibration Weight  | OIML M1 |
| 700100030   | M1 2kg Calibration Weight  | OIML M1 |

## Stainless steel weight sets

| Part Number | Model                                | Class   |
|-------------|--------------------------------------|---------|
| 700100026   | E2 1mg - 200g calibration weight set | OIML E2 |
| 700100207   | E2 1g to 200g calibration weight set | OIML E2 |
| 700100028   | F1 1mg - 200g Calibration Weight Set | OIML F1 |
| 700100011   | F1 1mg - 500g Calibration Weight Set | OIML F1 |
| 700100027   | F1 1g - 100g calibration weight set  | OIML F1 |
| 700100049   | F1 1g -200g calibration weight set   | OIML F1 |
| 700100042   | F1 1g - 500g calibration weight set  | OIML F1 |
| 700100070   | F1 1g - 2kg calibration weight set   | OIML F1 |
| 700100035   | M1 1g - 100g calibration weight set  | OIML M1 |
| 700100037   | M1 1g - 200g calibration weight set  | OIML M1 |
| 700100228   | M1 1g - 500g calibration weight set  | OIML M1 |
| 700100071   | M1 1g - 2kg calibration weight set   | OIML M1 |

## Cast iron weights

| Part Number | Model                      | Class   |
|-------------|----------------------------|---------|
| 700100024   | M1 5kg Calibration Weight  | OIML M1 |
| 700100031   | M1 10kg Calibration Weight | OIML M1 |
| 700100032   | M1 20kg Calibration Weight | OIML M1 |



## AdamDU - Data Collection Software



### Practical Functionality – Smart Features

- Monitor and collect data readings for up to 8 balances or scales simultaneously.
- Record custom data or notations along with readings using up to 6 user-defined fields.
- Log calibration reports to file for maintaining complete calibration records.
- Collect date and time with readings.
- Collect balance serial number with readings for unique identification. (Feature may not be available with all balances and scale).
- Configure AdamDU to remember individual session settings and file names.

### Statistics and Graphing

- View statistics including Min, Max, Median, Mean, Variance, and Standard Deviation.
- Graph readings in real time. Print results and graphs from within the AdamDU application.
- Quickly search for a specific reading, min, or max readings

### Easy Data Management

- Dynamically export readings in several file formats (text, CSV, HTML, XML) for importing to other systems or applications.
- Export captured readings automatically to Microsoft® Excel<sup>1</sup> or Microsoft® Word<sup>1</sup> for further analysis or reporting.
- Export captured readings to Windows® Clipboard for quick pasting in Windows® applications.



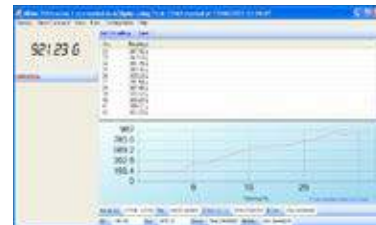
The Commander window lets you view data for up to 8 balances or scales on one screen for an overview of the active data sessions.

<sup>1</sup>You need a licensed copy of Microsoft® Word and Microsoft® Excel to use this facility

Microsoft Word, Microsoft Excell, Microsoft and Windows is a registered trademark of Microsoft Corporation in the United States and other countries.



Six user-defined fields are available for custom data entry with each reading. Custom data can be exported with the weighing data.



Real time graphing and statistics are easily viewable in the data grid. Balance control buttons let you request data or tare the balance right from the software.

| Part Number | Model            |
|-------------|------------------|
| 60000208    | Adam DU software |

## Anti-Vibration Table



| General Specifications     |                       |
|----------------------------|-----------------------|
| Overall dimensions (wxdxh) | 800mm x 600mm x 782mm |
| Work surface dimensions    | 400mm x 450mm         |
| Weight of work surface     | 49kg                  |
| Total Weight               | 77kg                  |

### FEATURES

- Scratch resistant granite slab
- Two table construction keeps the granite slab in the middle and reduces interference
- Large working surface of 400mm x 450mm
- Working surface around the vibration slab for resting samples
- Adjustable levelling feet for uneven surfaces

| Part Number | Model                |
|-------------|----------------------|
| 104008036   | Anti-vibration table |

# Hard Carry Cases



CPWplus



HCB & CQT

| General Specifications     |                       |                       |
|----------------------------|-----------------------|-----------------------|
| Carry Case Model           | CPWplus               | HCB & CQT             |
| Overall dimensions (wxdxh) | 480mm x 390mm x 150mm | 483mm x 362mm x 152mm |

## FEATURES

- Light weight and scratch resistant outside
- Foam padded interior for a snug fit
- Rugged construction keeps the scale safe
- Key lock latches for security
- Non-slip rubber feet

| Part Number | Model                                |
|-------------|--------------------------------------|
| 700100099   | Hard Carrying Case - CPWplus         |
| 308002042   | Hard Carrying Case - Highland®/Core® |
| 3002014371  | Hard Carrying Case - LBX             |
| 302013912   | Hard Carrying Case - CCT/CKT/Swift   |

# AE403 / Gladiator® Relay Box

## FEATURES

- 4 switches can be programmed to operate with the checkweighing functions
- Relays can be set up to drive 115/230VAC 1A or 24VDC 1A output
- Input from user equipment can be accepted at 15-25VDC or 12-25VAC to power the relay circuit
- Supplied with 12VDC 500mA adapter
- Works with AE 403, Gladiator, AGB and AGF models



| Part Number | Model     |
|-------------|-----------|
| 1100011297  | Relay Box |

# ATP Thermal Printer

## Technical Specifications

| Model                             | ATP Thermal Printer                                 |
|-----------------------------------|---|
| <b>Power Supply</b>               | External power adapter<br>110/220 VAC - 8.5 VDC OUT |
| <b>Baud Rates</b>                 | Selectable from 2400 to 115200                      |
| <b>Data Bits</b>                  | 8   |
| <b>Parity</b>                     | None  |
| <b>Operating Temperature</b>      | 0°C to + 45°C                                       |
| <b>Housing</b>                    | ABS plastic housing                                 |
| <b>Overall Dimensions (WxDxH)</b> | 4.5" x 7.2" x 3.5" / 114mm x 184mm x 90mm           |
| <b>Net Weight</b>                 | 1.7lb / 0.76kg with paper roll installed            |



## FEATURES

- Interface capabilities: serial port
- Support for up to 26 international character sets
- Print size 24 x 24 dot
- Column size 384 dots per line
- Print speed 50mm / sec
- 57.5mm paper width
- Selectable baud rates
- LED indicators to show power, error and when out of paper

| Part Number       | Model                                  |
|-------------------|--|
| <b>1120011156</b> | ATP Thermal Printer                    |
| <b>3126011263</b> | ATP Thermal Printer Paper              |
| <b>3126011281</b> | ATP Thermal Printer Paper (pack of 10) |

# AIP Printer



## FEATURES

- Dimensions: 114 mm x 184 mm x 90 mm
- Interface capabilities: serial port
- Support for up to 26 international character sets
- Print size 24 x 24 dot
- Column size 384 dots per line
- Print speed 50mm / sec
- 57.5mm paper width
- Selectable baud rates
- LED indicators to show power, error and when out of paper
- RS-232 cables included (9F and 9M, 25 pin)

| Part Number       | Model                       |
|-------------------|-----------------------------|
| <b>1120014641</b> | AIP impact printer          |
| <b>3126014659</b> | AIP printer paper           |
| <b>3126014660</b> | AIP printer paper (10 Pack) |

[www.adamequipment.co.uk](http://www.adamequipment.co.uk)

**Shanghai, China**

T: + 86 (21) 5180 1901

E: [sales@adamequipment.com.cn](mailto:sales@adamequipment.com.cn)

**Milton Keynes, UK**

T: +44 (0)1908 274545

E: [sales@adamequipment.co.uk](mailto:sales@adamequipment.co.uk)

**Oxford, CT, USA**

T: +1 (203) 790 4774

E: [sales@adamequipment.com](mailto:sales@adamequipment.com)

**Perth, Australia**

T: +61 (0) 8 6461 6236

E: [sales@adamequipment.com.au](mailto:sales@adamequipment.com.au)

**Johannesburg, South Africa**

T: +27 (0)11 9749745

E: [sales@adamequipment.co.za](mailto:sales@adamequipment.co.za)

**Felde, Germany**

T: +49 (0) 4340-40300-0

E: [vertrieb@eadam.de](mailto:vertrieb@eadam.de)

SEA ROW-Euro 9070

Adam Equipment follows a policy of continuous improvement and reserves the right to change specification and pricing without notice.  
Adam Equipment's standard terms and conditions of sale apply. Errors and omissions excepted.

©Adam Equipment. All rights reserved.