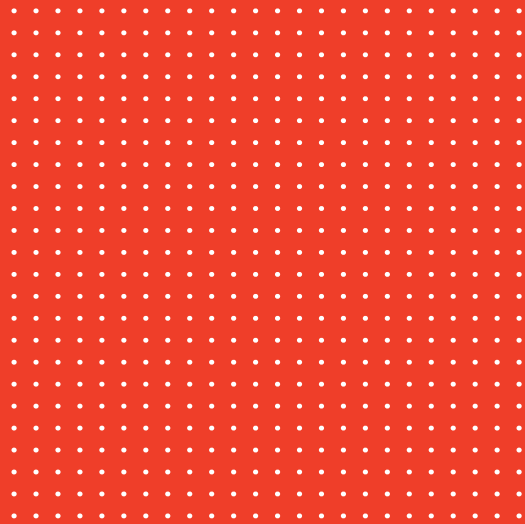
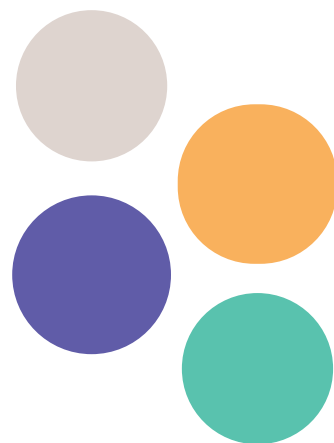


Language
Cert



Qualifications Portfolio

The Next Generation of Language Exams



Who we are



LanguageCert is an Awarding Organisation dedicated to language skills assessment and certification. It is a UK-based company recognised by Ofqual that develops its own qualifications to offer its global community of learners a comprehensive portfolio of high-quality English language certifications, catering for candidates wanting to live, work or study in English-speaking environments. LanguageCert also partners with renowned organisations worldwide to offer high-quality language skills assessment and certification in Spanish and Turkish. English, Spanish and Turkish language exams assess all CEFR levels.

LanguageCert uses innovative technology to make language assessment secure, reliable and flexible, for both candidates and test centres. It offers paper-based, computer-based and Online exams with remote, live invigilation and short turnaround times from exam booking to certification. Exams are available at LanguageCert Approved Test Centres or through LanguageCert Online exams.

LanguageCert has been awarded a multi-year agreement to deliver Home Office approved Secure English Language Test (SELT) exams worldwide.

LanguageCert
SELT

LanguageCert International ESOL SELT (Secure English Language Test) exams have been approved by the UK Visas & Immigration as proof of English language competence for those applying for UK visas, settlement or citizenship. Our SELT exams cover the full spectrum of UKVI requirements regarding valid proof of English language competence. LanguageCert SELT exams are Ofqual regulated and offered exclusively at our approved SELT Test Centres around the world.

LanguageCert SELT for Life in the UK

LanguageCert International ESOL SELT Speaking & Listening exams are suitable for those seeking to acquire a visa to join family or extend their stay in the UK, and for settlement or citizenship purposes. Exams are available at CEFR levels A1, A2 and B1.

LanguageCert SELT for Study in the UK

LanguageCert International ESOL SELT Listening, Reading, Writing & Speaking exams are suitable for those seeking to acquire a visa to study in the UK, mostly in non-degree programmes or as required by each educational institution. Exams are available at CEFR levels B1 to C2.

LanguageCert SELT for Work in the UK

LanguageCert International ESOL SELT Speaking & Listening or Listening, Reading, Writing & Speaking exams are suitable for those seeking to acquire a visa to work in the UK and who need to provide proof of English language competency. Exams are available at CEFR levels B1 to C2.



LanguageCert International ESOL is a set of internationally recognised Ofqual regulated English language qualifications, mapped to the Common European Framework of Reference (CEFR). These exams are intended for non-native speakers who need to prove their English skills for study, work or general purposes. Written and Spoken exams can be taken independently of each other and lead to two separate certificates.



LanguageCert Test of English (LTE) is a set of Ofqual regulated English language qualifications, mapped to the Common European Framework of Reference (CEFR). These tests assess Listening & Reading skills, and are used to prove English language proficiency in work settings. Candidates receive a certificate placing them at the appropriate CEFR level based on their performance.



LanguageCert Young Learners ESOL is a set of English Language qualifications created specifically for young candidates (7+ years old) at pre-A1 (Fox) and A1 (Owl) levels. These exams aim to motivate children to develop their English language skills while familiarising them with examination processes. All four skills (Listening, Reading, Writing & Speaking) are assessed.



LanguageCert USAL esPro, is a set of internationally recognised professional Spanish language exams, developed by Cursos Internacionales de la Universidad de Salamanca, the world's most prestigious institution for testing Spanish as a foreign language, and administered by LanguageCert. They have been designed to abide by the most rigorous quality and reliability standards and are mapped to the CEFR. Candidates receive a certificate placing them at the appropriate CEFR level based on their performance.



LanguageCert AÜ TÖMER TürkYet, previously known as Turkish Language Proficiency exams, is a set of Turkish language exams, developed by Ankara Üniversitesi TÖMER and managed by LanguageCert. They have been designed to abide by the most rigorous quality and reliability standards and are mapped to the CEFR. These exams assess all four skills (Listening, Reading, Writing & Speaking) and are available at levels A1-C2 of the CEFR.

LanguageCert Online exams with remote, live invigilation

LanguageCert uses state-of-the-art technology to deliver online exams with live invigilation, providing a secure and reliable way for candidates of all ages to take high-stakes exams from their preferred location **without having to visit a Test Centre**. All that is required is a quiet room with no distractions, a computer, a web-cam and internet connection. LanguageCert Online exams are available for LanguageCert International ESOL, LTE and LanguageCert USAL esPro.

Benefits

- /// Fast: exams can be booked up to 4 hours beforehand with results in just 3 business days
- /// Flexible: available 24/7 and can be taken anytime, at any preferred location
- /// Friendly: a real person is online to ensure a comfortable, secure and stress-free experience
- ///

International Recognition

LanguageCert International ESOL
Written (Listening, Reading, Writing)
and Spoken (Speaking) exams are
Ofqual regulated and recognised
by designated official authorities
and universities internationally.

LanguageCert Memberships

ALTE
INSTITUTIONAL AFFILIATE

EALTA
Institutional Member

Eaquals

ieaa
International Education
Association of Australia

FAB | Federation of
Awarding Bodies

AISLi
Assessment
Institutions
Specialist
Liaison

BAC
British Accreditation
Council

**SOUTH
ENGLISH
UK**
corporate member

feltom
TRUSTED PARTNER

**International
House**
World Organisation

languagecert.org | info@languagecert.org